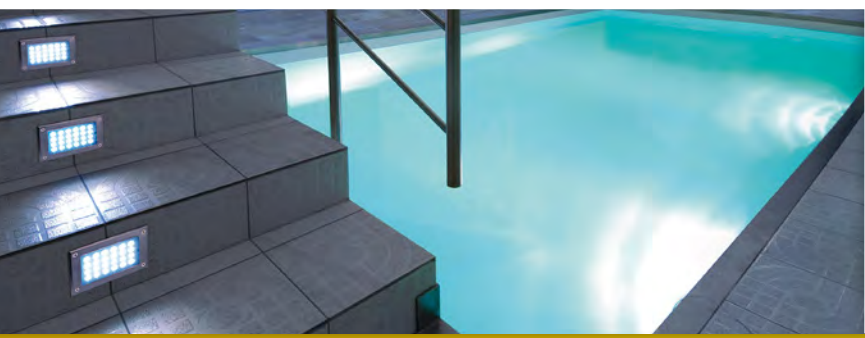
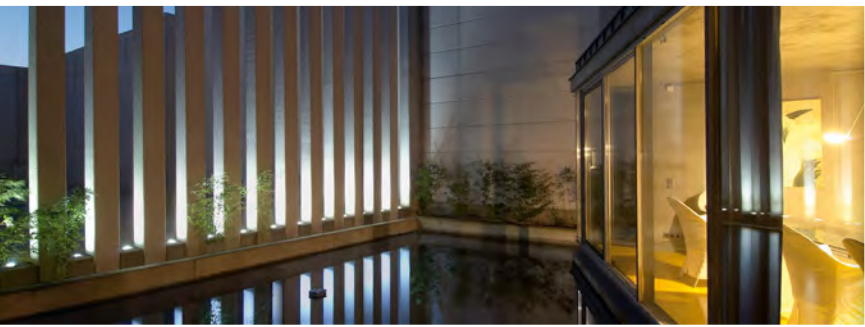
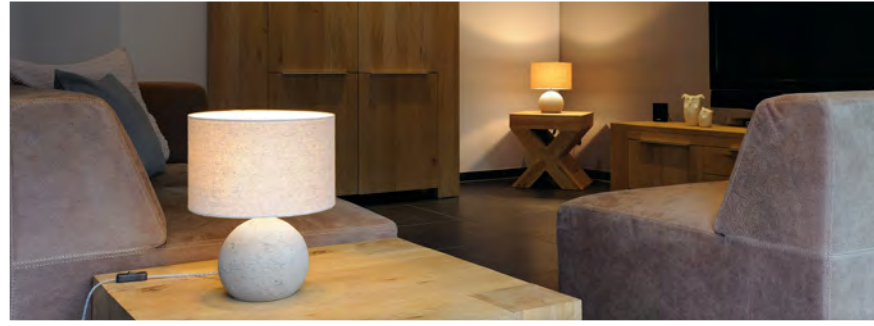
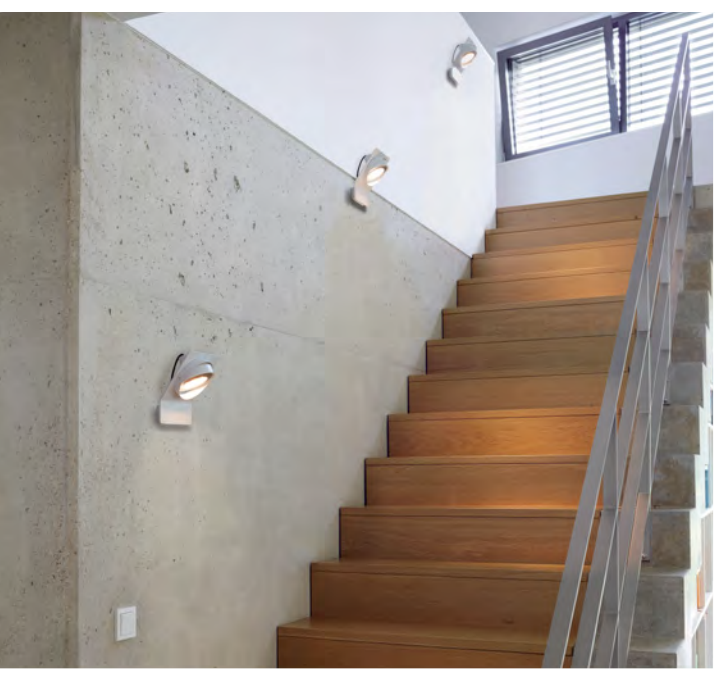




ELECTRO



# PROMOTION LIST

SPRING 2017

# -50%

# zolang de voorraad strekt

## **PROMOTION LIST SPRING 2017**

---

WE'RE DOING OUR SPRING CLEANING.  
MANY SPECIAL OFFERS NOW AT LOWER PRICES.

In this promotion list, you will find an extensive range of special offers, brand new and in their original packaging. Enough light for many applications, as long as stocks last. And if you would like to acquire the entire stock of some of the special offers, we would be happy to let you know the number of items in stock and the special conditions that apply.

All of the special offers cannot be exchanged.

All illustrations and information are non-binding and subject to correction.

**LIPSY FLOOR**

Outdoor light, white, E27 ESL, max. 23W (excl.), translucent, mobile lighting object with a closed, high-strength lamp shade made of opalescent plastic. IP44, also suitable for outdoor use, incl. connection lead and mains plug.

Ø/H: 34/22 cm  
 Connection lead L: 2 m  
 EEI=A-A++<sup>1)</sup>

**white** 227361

**LIPSY FLOOR****SOPRANA 2**

Floor stand, round, white or beige fabric shade, steel base, E27 max. 60W (excl.), 2 packages, connection lead with integrated foot switch.

Ø/H: 40/170 cm  
 Shade Ø/H: 40/35 cm  
 Connection lead L: 2 m  
 EEI=E-A++<sup>1)</sup>

**white textile shade** 155362  
**beige textile shade** 155363

**SOPRANA SL-2****SOPRANA SL-3**

Floor stand, beige, brushed nickel base, with marbled textile cover. E27, max. 40W (excl.), the adjustable light shade can be positioned as required.

Tilttable: 135°  
 H: 182 cm  
 Shade Ø/H: 13/27 cm  
 Connection lead L: 2 m  
 EEI=E-A++<sup>1)</sup>

**beige** 155633

**SOPRANA SL-3****SOPRANA TRIPOD**

Floor stand, white shade, three chromed legs, E27, max. 60W (excl.). Incl. connection lead with integrated switch.

W/H: 65/155 cm  
 Shade Ø/H: 45.5/28.5 cm  
 Connection lead L: 3.3 m  
 EEI=E-A++<sup>1)</sup>

**white** 155733

**SOPRANA TRIPOD****SOPRANA TL-2**

Table lamp, round, white or beige textile shade, steel base, E27 max. 60W (excl.), incl. connection lead with integrated foot switch.

Ø/H: 30/61 cm  
 Shade Ø/H: 30/24 cm  
 Connection lead L: 1.8 m  
 EEI=E-A++<sup>1)</sup>

**white** 155352  
**beige** 155353

**SOPRANA TL-2****SOPRANA TL-1**

Table lamp, round, cream-white textile shade, imitation leather/ steel base, E27 max. 60W (excl.), incl. connection lead with integrated foot switch.

Ø/H: 32/56 cm  
 Shade Ø/H: 32/22 cm  
 Connection lead L: 2 m  
 EEI=E-A++<sup>1)</sup>

**cream-white** 155412

**SOPRANA TL-1****SOPRANA SOLID TL-1**

Table lamp, round, grey-beige textile shade, concrete base, E27 max. 24W (excl.). Incl. connection lead with integrated switch.

Ø/H: 28.5/35 cm  
 Shade Ø/H: 28.5/18 cm  
 Connection lead L: 1.8 m  
 EEI=E-A++<sup>1)</sup>

**grey-beige** 155412

**SOPRANA SOLID TL-1**



**ROTOBALL HIT**

Pendant, silver-grey/white, G12, 150W max. (excl.), made of temperature-resistant polyethylene and steel, incl. electronic ballast.

Ø: 50 cm  
Pendant length: 2 m  
Canopy Ø/H: 9.6/3.5 cm  
EEL=A-A+<sup>1)</sup>

**silver-grey 165420**

**ROTOBALL HIT**



**CONE SHADE TINTO**

Pendant, black/chrome, E27, max. 25W with max. L: 17.5 cm (excl.), with black textile coated connection cable.

Ø/H: 26.5/35 cm  
Pendant length: 1.3 m  
Canopy Ø/H: 9/2 cm  
EEL=E-A++<sup>1)</sup>

**black 165500**

**CONE SHADE TINTO**



**CONE SHADE SATIN**

Pendant, frosted glass/chrome, E27, max. 60W with max. L: 17.5 cm (excl.), with black textile coated connection cable.

Ø/H: 26.5/35 cm  
Pendant length: 1.3 m  
Canopy Ø/H: 9/2 cm  
EEL=E-A++<sup>1)</sup>

**Frosted glass 165501**

**CONE SHADE SATIN**



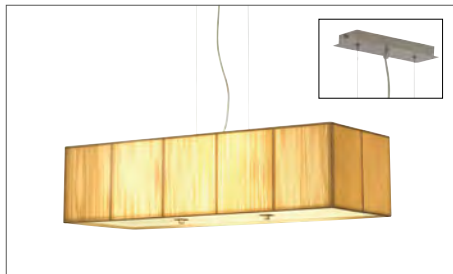
**SOPRANA PD-4**

Pendant, oval, black textile shade, 3xE27, max. 3x25W (excl.) with max. L: 16 cm  
Underside of light closed, frosted acrylic glass.

L/W/H: 80/30/20 cm  
Pendant length: 1.5 m  
Canopy L/W/H: 30/8.5/3.5 cm  
EEL=E-A++<sup>1)</sup>

**black 155280**

**SOPRANA PD-4**



**LASSON PD-1**

Pendant, square, beige, 4xE27, 4x24W max. (excl.) up to max. Ø/L: 8/18 cm (excl.). Underside of light closed, frosted acrylic glass.

L/W/H: 80/30/20 cm  
Pendant length: 1.5 m  
Canopy L/W/H: 22/8.5/2.5 cm  
EEL=E-A++<sup>1)</sup>

**beige 155291**

**LASSON PD-1**



**LASSON PD-3**

Pendant, round, beige, 3xE27, 3x60W max. (excl.) with max. L: 13 cm Underside of light closed, frosted acrylic glass.

Ø/H: 45/25 cm  
Pendant length: 1.5 m  
Canopy Ø/H: 15/2.5 cm  
EEL=E-A++<sup>1)</sup>

**beige 155301**

**LASSON PD-3**



**SOPRANA PD-3**

Pendant, round, white or beige textile shade, E27, max. 40W (excl.)

Ø/H: 15.5/40 cm  
Pendant length: 1.5 m  
Canopy Ø/H: 12/3 cm  
EEL=E-A++<sup>1)</sup>

**white 155382**

**beige 155383**

**SOPRANA PD-3**



**CORDA**

Pendant, round, black or beige textile shade with acrylic glass, E27, max. 3x60W (excl.) up to max. L: 11.7 cm

Ø/H: 45/25 cm  
Pendant length: 1.5 m  
Canopy Ø/H: 15/2.5 cm  
EEL=E-A++<sup>1)</sup>

**black 155400**

**beige 155402**

**CORDA**



**SOPRANA CONE**

Pendant, black, white or grey shade, E14, max. 40W (excl.)

Ø/H: 14.4/35 cm  
Pendant length: 1.5 m  
Canopy Ø/H: 11/2.5 cm  
EEL=E-A++<sup>1)</sup>

**black 155760**

**white 155761**

**grey 155764**

**SOPRANA CONE PD-1**





**DIABO**

Pendant PD-1, chrome, 1x GU10, max. 35W (excl.), incl. Canopy

Ø/H: 7/15 cm  
 Pendant length: 1.5 m  
 Canopy Ø/H: 8.5/2 cm  
 EEI=E-A++ <sup>1)</sup>

**chrome** **114582**  
**DIABO PD-1**



**PIRUS**

Pendant, chrome, E14, ESL max. 11W (excl.), frosted glass, with a red textile-coated connection cable.

Ø/H: 14/21 cm  
 Pendant length: 1.5 m  
 Canopy Ø/H: 8.5/2 cm  
 EEI=A-A++ <sup>1)</sup>

**chrome** **133401**  
**PIRUS**



**BARRO**

Pendant, silver-grey aluminium, GU10, max. 50W (excl.), with canopy and with grid (special effect).

Ø/H: 7/15 cm  
 Pendant length: 1.5 m  
 Canopy Ø/H: 7.1/3.3 cm  
 EEI=E-A++ <sup>1)</sup>

**silver-grey** **133432**  
**BARRO**



**BIG LIGHT EYE**

Pendant, chrome, E27, max. 25W (excl.), frosted glass, with canopy,

Ø/H: 25.5/27.5 cm  
 Pendant length: 1.5 m  
 Canopy Ø/H: 13/2 cm  
 EEI=A-A++ <sup>1)</sup>

**chrome** **133562**  
**BIG LIGHT EYE**



**MALANG PD-1**

Pendant, round, chrome, E27, max. 60W (excl.), frosted glass, with canopy,

Ø/H: 32/22 cm  
 Pendant length: 1.5 m  
 Canopy Ø/H: 13/2.5 cm  
 EEI=E-A++ <sup>1)</sup>

**chrome** **133592**  
**MALANG PD-1**



**LEFA 1**

Pendant, round, white, 3000K warm white, 7.1W, clear/frosted glass, incl. LED driver.

Ø/H: 10.5/20 cm  
 Pendant length: 1.5 m  
 Canopy Ø/H: 10.5/3.5 cm  
 EEI=A-A++ <sup>1)</sup>

**white** **133421**  
**LEFA 1**





**AIXLIGHT LONG QRB111**

Pendant, silver-grey, aluminium, four-headed, 4xG53, max. 50W (excl.), with canopy, electronic transformer, dimmable. L/W/H: 86.5/19/3 cm. Pendant length: 2.5 m Canopy L/W/H: 7.4/4/2.5 cm. EEI=D-A+ 1)

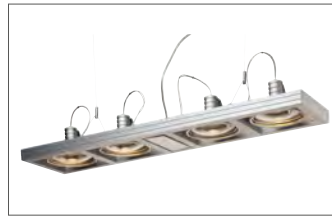
**silver-grey** **154202**  
AIXLIGHT LONG QRB111



**AIXLIGHT SQUARE QRB111**

Pendant, silver-grey, aluminium, four-headed, 4xG53, max. 50W (excl.), with canopy, electronic transformer, dimmable. L/W/H: 35.5/45/3 cm. Pendant length: 2.5 m Canopy L/W/H: 7.4/4/2.5 cm. EEI=D-A+ 1)

**silver-grey** **154212**  
AIXLIGHT SQUARE QRB111



**AIXLIGHT LONG ES111**

Pendant, silver-grey, aluminium, four-headed, 4xGU10, max. 4x75W (excl.), with canopy. Gimbal-mounted, adjustable: 180°. L/W/H: 78/19/3 cm. Pendant length: 2.5 m Canopy L/W/H: 7.4/4/2.5 cm. EEI=E-A++ 1)

**silver-grey** **154362**  
AIXLIGHT LONG ES111



**AIXLIGHT SQUARE ES111**

Pendant, silver-grey, aluminium, four-headed, 4xGU10, max. 4x75W (excl.), recommended accessories 154312. Gimbal-mounted, adjustable: 180°. L/W/H: 44/35.5/10 cm. Pendant length: 2.5 m Canopy L/W/H: 7.4/4/2.5 cm. EEI=E-A++ 1)

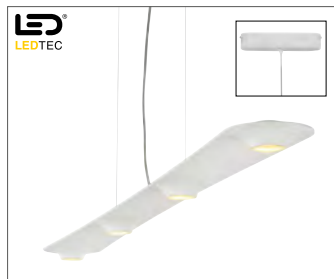
**silver-grey** **154372**  
AIXLIGHT SQUARE ES111



**AIXLIGHT SQUARE GU10**

Pendant, silver-grey, aluminium, four-headed, 4xGU10, max. 4x50W (excl.), with canopy. L/W/H: 30.5/24/3 cm. Pendant length: 2.5 m Canopy L/W/H: 7.4/4/2.5 cm. EEI=E-A++ 1)

**silver-grey** **154252**  
AIXLIGHT SQUARE GU10



**LEFA 4**

Pendant, four-headed, white, aluminium/plastic, 24.4W, 3000K warm white, incl. LED driver.

L/W/H: 120/12/3.5 cm  
Pendant length: 1.5 m  
Canopy L/W/H: 26.9/6/5.1 cm  
EEI=A-A++ 2)

**white, not dimmable** **157821**  
**LEFA 4**

**white, dimmable** **157831**  
**LEFA 4**



**T5 GRILL**

Pendant, silver-grey, aluminium with acrylic glass, 4xT5 24W and 3xQRB111 50W max. (excl.). Lamps can be separately switched.

L/W/H: 60.5/60.5/6.5 cm  
Pendant length: 1.5 m  
Canopy L/W/H: 7.5/7.5/2.5 cm  
EEI=D-A+ 1)

**silver-grey** **157112**  
**T5 GRILL QRB**



**PARA DOME**

Pendant, anthracite/clear, aluminium and plastic, suitable for industrial areas, HQI-E E27 max. 70W (excl.), incl. electronic ballast.

Ø/H: 33/42 cm  
Pendant length: 1.5 m  
Canopy Ø/H: 12.5/3 cm  
EEI=A-A+ 1)

**anthracite** **165110**  
**PARA DOME 2 HIE**



**LED PANEL**

Pendant PD-115, square, aluminium/acrylic glass, 48W, 3000K, incl. LED driver.

L/W/H: 59.6/59.6/4.5 cm  
Pendant length: 2 m  
EEI=A-A++ 2)

**white** **158512**  
**LED PANEL PD 115**



**Q-LINE SINGLE**

Pendant, white, G5, ESL, 1x35W max. (excl.), single-headed, T5 energy-saving lamp, acrylic glass diffuser on the underside. Cover caps in chrome.

L/W/H: 151/5.7/16 cm  
Pendant length: 2 m  
EEI=A-A+ 1)

**white/chrome** **155011**  
**Q-LINE SINGLE**



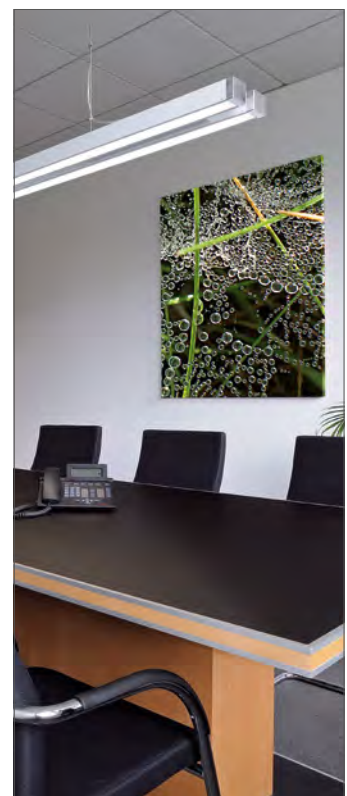
**Q-LINE DOUBLE**

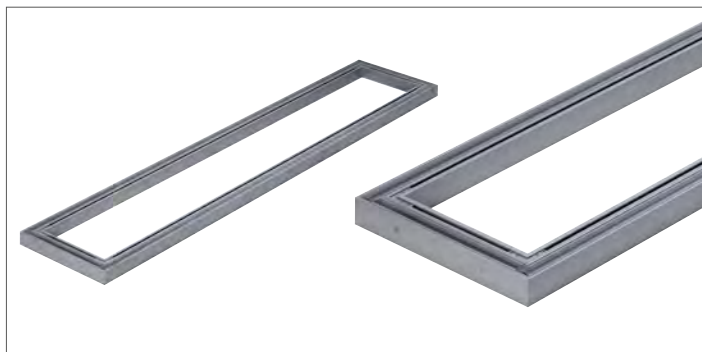
Pendant, white/chrome, G5, 2x35W max. (excl.), ESL, two-headed, T5 energy-saving lamp, acrylic glass diffuser on the underside, cover caps in chrome.

L/W/H: 151/15.5/7.5 cm  
Pendant length: 2 m  
EEI=A-A+ 1)

**white/chrome** **155021**  
**Q-LINE DOUBLE**

**Recommended accessory**  
Q-Line corner connector for Q-Line Single. Aluminium  
**155062**





**AIXLIGHT PENDANT SYSTEM  
BASIC FRAME**

silver-grey, L/W/H 110/22.5/4.5 cm and  
160/22./4.5

**silver-grey 110 cm      154704      silver-grey 160 cm      154714**



**HIT MODULE**

HIT MODULE, for AIXLIGHT PENDANT SYSTEM, silver-grey, aluminium, G12 35W (excl.), beam angle 38°.

Gimbal-mounted, adjustable: 60°  
L/W/H: 32/19/16 cm  
Connection lead 1.8 m  
EEL=A-A+<sup>1)</sup>

**silver-grey 35W      154824**  
**silver-grey 70W      154794**

**HIT MODULE**

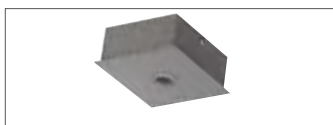


**Wall and ceiling bracket**

long, 2 pce., silver-grey  
L: 16 cm, tilt range: 90°

**154312**

**Wall and ceiling bracket**

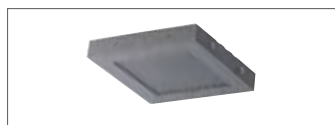


**Canopy with feed-in cable**

Aixlight® Pendant System, steel, silver-grey, L/W/H: 11/10/4 cm. Connection lead L: 2.5 m. max. Current: 16A.

**154734**

**Canopy with feed-in cable**



**Connection/Feed-in box**

Aixlight® Pendant System, aluminium, silver-grey. L/W/H: 22.5/22.5/3.5 cm.

**154724**

**Connection/Feed-in box**



**Connection screw set**

Aixlight® Pendant System, steel, chrome, 2 pcs, total Ø/L: 1.5/2 cm. 1 set is required for every mounting point.

**2 pce.      154744**

**Connection screw set**

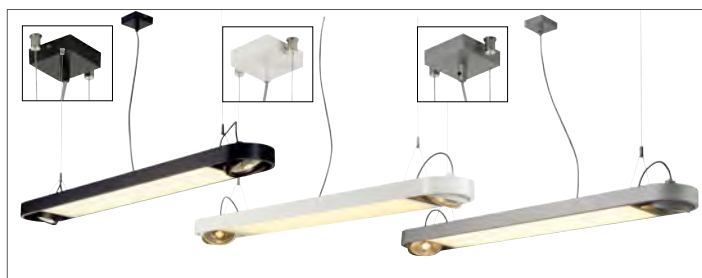


**Frame connector**

Aixlight® Pendant System, aluminium, silver-grey, W/H/D: 7/2.5/2 cm. 2 knurled-head screws (incl.)

**2 pce.      154754**

**Frame connector**



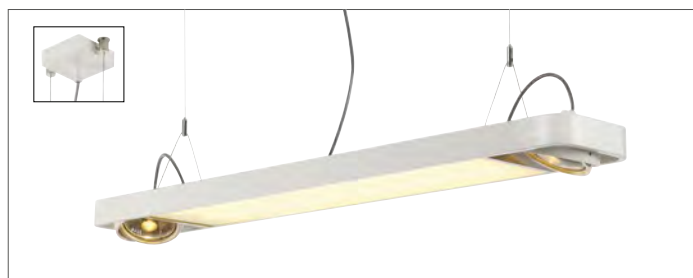
**AIXLIGHT R OFFICE**

Pendant light, round, black, white or silver-grey, aluminium, 2xT5 ESL 39W + 2x GU10 QPAR111 max.75W (excl.), two-headed, incl. electronic ballast. Frosted glass light surface for the T5 fluorescent tube.

Gimbal-mounted, adjustable: 90°  
L/W/H: 122.5/18/5 cm  
Pendant length: 2 m  
Canopy L/W/H: 8.5/7.8/2.7 cm  
EEL=E-A++<sup>1)</sup>

**black      159090**  
**white      159091**  
**silver-grey      159094**

**AIXLIGHT R OFFICE pendant**



**AIXLIGHT R2 OFFICE**

Pendant light, semicircular, white, aluminium, 2xT5 ESL 39W + 2xGU10 QPAR111 max.75W (excl.), two-headed, incl. electronic ballast. Frosted glass light surface for the T5 fluorescent tube.

Gimbal-mounted, adjustable: 90°  
L/W/H: 122.5/18/5 cm  
Pendant length: 2 m  
Canopy L/W/H: 8.5/7.8/2.7 cm  
EEL=E-A++<sup>1)</sup>

**white      159101**

**AIXLIGHT R2 OFFICE**



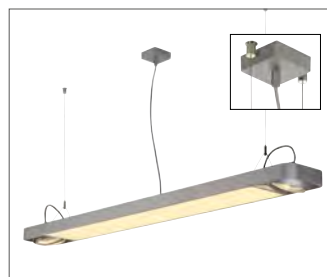
**AIXLIGHT R OFFICE**

Pendant, round, black, white or silver-grey, aluminium, 2xT5 ESL 54W + GU10 QPAR111 max. 75W (excl.), two-headed, incl. electronic ballast. Frosted glass light surface for the T5 fluorescent tube. The tubes can be switched individually.

Gimbal-mounted, adjustable: 90°  
L/W/H: 153/18/5 cm  
Pendant length: 2 m  
Canopy L/W/H: 8.5/7.8/2.7 cm  
EEL=E-A++<sup>1)</sup>

**black      159110**  
**white      159111**  
**silver-grey      159114**

**AIXLIGHT R OFFICE**



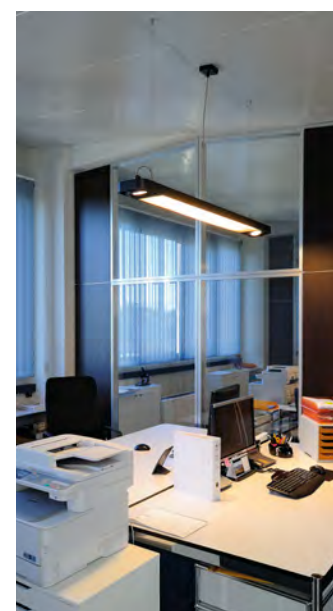
**AIXLIGHT R2 OFFICE**

Pendant, semicircular, silver-grey, aluminium, 2xT5 ESL 54W + 2xGU10 QPAR111 max. 75W (excl.), incl. electronic ballast. The tubes can be switched individually.

Gimbal-mounted, adjustable: 90°  
L/W/H: 153/18/5 cm  
Pendant length: 2 m  
Canopy L/W/H: 8.5/7.8/2.7 cm  
EEL=E-A++<sup>1)</sup>

**silver-grey      159124**

**AIXLIGHT R2 OFFICE**







**WORK LIGHT**

Pendant, silver-grey aluminium, 2xT5 54W (excl.), suitable for screen work stations, incl. electronic ballast, dimmable.

L/W/H: 122.5/ 18.5/8 cm  
 Pendant length: 2.5 m  
 Canopy L/W/H: 7.5/7.5/2.5 cm  
 EEI=A-A+ 1)

**silver-grey** 157284  
**WORK LIGHT**



**AIXLIGHT R DUO QRB 111**

Pendant, round, silver-grey, aluminium, QRB111, max. 2x50W (excl.), incl. electronic transformer.

Gimbal-mounted, adjustable: 90°  
 L/W/H: 48/ 18/5 cm  
 Pendant length: 2 m  
 Canopy L/W/H: 8.5/7.8/2.7 cm  
 EEI=D-A+ 1)

**silver-grey** 159024  
**AIXLIGHT R DUO QRB 111**

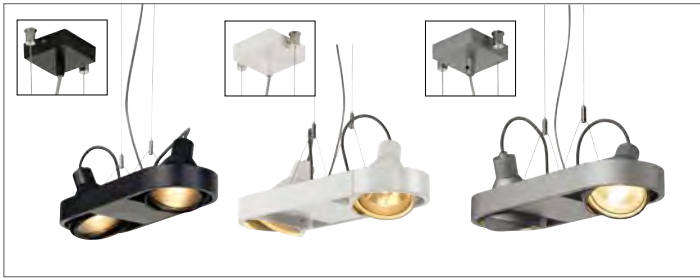


**Recommended accessory**

**REFLECTOR for AIXLIGHT R DUO**  
 polished aluminium

24° 159200  
 38° 159201  
 60° 159202

**REFLECTOR**



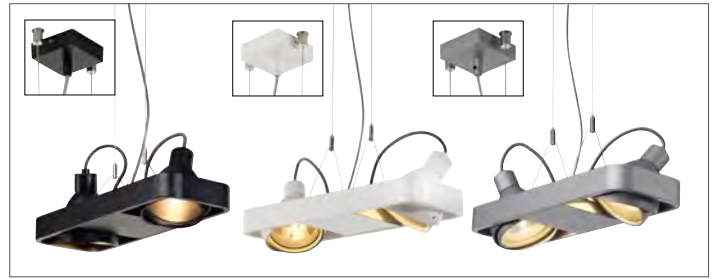
**AIXLIGHT R DUO HQI 111**

Pendant, round, black, white or silver-grey, aluminium, G12, 2x70W max. (excl.), incl. electronic ballast.

Gimbal-mounted, adjustable: 90°  
 L/W/H: 48/ 18/15 cm  
 Pendant length: 2 m  
 Canopy L/W/H: 8.5/7.8/2.7 cm  
 EEI=A-A+ 1)

**black** 159040  
**white** 159041  
**silver-grey** 159044

**AIXLIGHT R DUO HQI 111**



**AIXLIGHT R2 DUO HQI 111**

Pendant, semicircular, black, white or silver-grey, aluminium, G12, 2x70W max. (excl.), incl. electronic ballast

Gimbal-mounted, adjustable: 90°  
 L/W/H: 48/ 18/15 cm  
 Pendant length: 2 m  
 Canopy L/W/H: 8.5/7.8/2.7 cm  
 EEI=A-A+ 1)

**black** 159050  
**white** 159051  
**silver-grey** 159054

**AIXLIGHT R2 DUO HQI 111**



**AIXLIGHT R LONG QRB 111**

Pendant, round, black, white or silver-grey, aluminium, 4xG53 QR111, max. 4x50W (excl.), incl. electronic transformer.

Gimbal-mounted, adjustable: 90°  
 L/W/H: 77/ 18/5 cm  
 Pendant length: 2 m  
 Canopy L/W/H: 8.5/7.8/2.7 cm  
 EEI=A-A+ 1)

**black** 159070  
**white** 159071  
**silver-grey** 159074

**AIXLIGHT R LONG QRB 111**



**AIXLIGHT R2 LONG QRB111**

Pendant, semicircular, black or white, aluminium, 4xG53 QR111, max. 4x50W (excl.), incl. electronic transformer.

Gimbal-mounted, adjustable: 90°  
 L/W/H: 77/ 18/5 cm  
 Pendant length: 2 m  
 Canopy L/W/H: 8.5/7.8/2.7 cm  
 EEI=A-A+ 1)

**black** 159080  
**white** 159081

**AIXLIGHT R2 LONG QRB111**





**MIBO CURVE**

Vanity light, chrome, partly frosted glass, 2xG9, 2x25W max. (excl.), IP 21 suitable for moisture-prone areas, mounted by pushing onto mirror, max. D: 6.5 mm

W/H/D: 22.5/13/16 cm  
EEL=D-A+<sup>1)</sup>

**chrome 146392**

**MIBO CURVE**



**JESSY WL-1 QRB**

Wall light, white, aluminium, QRB 111 QR111, max. 75W (excl.), rotatable, incl. electronic transformer.

W/H/D: 15.3/28.5/13 cm  
Tilt range: 60°  
Rotation range: 350°  
Canopy W/H/D: 10.5/10.5/3.5 cm  
EEL=D-A+<sup>1)</sup>

**white 147001**

**JESSY WL-1 QRB**



**JESSY WL-2 ES111**

Wall light, white, aluminium, GU10, ES111 QPAR111, max. 75W (excl.), rotatable and tiltable.

W/H/D: 15.2/21/14 cm  
Tilt range: 90°  
Rotation range: 350°  
Canopy W/H/D: 12/4.5/2 cm  
EEL=E-A++<sup>1)</sup>

**white 147011**

**JESSY WL-2 ES111**



**OVIS**

Wall light, silver-grey, aluminium, 2xGU10 QPAR51, max. 2x50W (excl.), two-headed.

W/H/D: 6/28/13.5 cm  
Rotation range: 350°  
Canopy W/H/D: 12/4.5/2 cm  
EEL=E-A++<sup>1)</sup>

**silver-grey 147112**

**OVIS**



**RETROSIX WALL**

Wall light G53 QR111, aluminium brushed, clear acrylic glass, max. 50 W (excl.), incl. electronic transformer.

W/H/D: 17.5/9/24.5 cm  
Tilt range: 60°  
Rotation range: 360°  
EEL=D-A+<sup>1)</sup>

**Clear acrylic glass 147584**

**RETROSIX WALL**



**RETROSIX WALL UP-DOWN**

Wall light GU10 QPAR51, clear acrylic glass/aluminium brushed, GU10, max 2x50W (excl.).

W/H/D: 9/22/12 cm  
EEL=E-A++<sup>1)</sup>

**Clear acrylic glass 147585**

**RETROSIX WALL UP-DOWN**



**RETROSIX WALL**

Wall light G53 QR111, aluminium brushed/black acrylic glass, max.50W (excl.), incl. electronic transformer.

W/H/D: 17.5/9/24.5 cm  
Tilt range: 60°  
Rotation range: 360°  
EEL=D-A+<sup>1)</sup>

**Black acrylic glass 147594**

**RETROSIX WALL**



**BIG THEO**

Wall light, up/down, square, silver-grey, aluminium/glass, 2x GU10 QPAR111, max. 2x75W (excl.).

W/H/D: 13/27/13.5 cm  
EEL=E-A++<sup>1)</sup>

**silver-grey 149294**

**BIG THEO**



**SQUARE WALL**

Wall light, square, silver-grey, aluminium with frosted glass cover, GU10 QPA51, max. 50W (excl.).

W/H/D: 7/32.5/7 cm  
EEL=E-A++<sup>1)</sup>

**silver-grey 151390**

**SQUARE WALL**



**WL 149**

Wall light, G9 QT14, aluminium matt white or chrome, frosted glass, square, up/down, max. 2x42W, (excl.).

W/H/D: 23.6/5/10 cm  
EEL=D-A+<sup>1)</sup>

**matt white 149501**

**WL 149**

**chrome 149502**

**WL 149**



**SHELL**

Wall light, TC-DEL, white, energy saving lamp, max. 26W (excl.), incl. electronic ballast.

W/H/D: 22/15/16.5 cm  
EEL=A<sup>1)</sup>

**white 150471**

**SHELL**



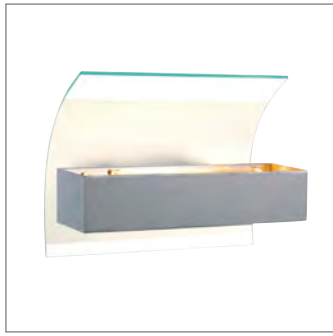
**BLOX**

Wall light, metal chrome and clear glass, 2x G9 QT41 max 40W (excl.).

W/H/D: 20.4/10/10.5 cm  
EEL=D-A+<sup>1)</sup>

**chrome 151260**

**BLOX**



**ANDREAS CURVE**

Wall light, silver-grey, aluminium with partially frosted glass for QT-DE12 118 mm, max. 100W (excl.).

W/H/D: 20.5/11.5/15.5 cm  
EEL=D-A+ <sup>1)</sup>

**silver-grey** 151405  
**ANDREAS CURVE**



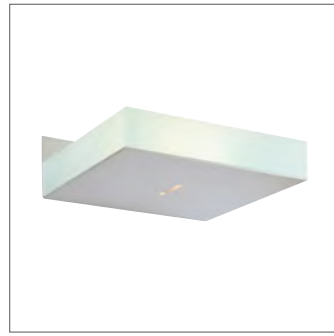
**NEW ANDREAS**

Wall light, R7s QT-DE12 118 mm, chrome or silver-grey, aluminium with protective glass for R7s, max. 100W (excl.).

W/H/D: 18/7/9 cm  
EEL=D-A+ <sup>1)</sup>

**silver-grey** 151424  
**NEW ANDREAS**

**chrome** 151422  
**NEW ANDREAS**



**HARI**

Wall light, solid glass body, frosted silver-grey, square, G9 QT14, max. 42W (excl.).

W/H/D: 12.5/5/13 cm  
EEL=D-A+ <sup>1)</sup>

**silver-grey** 151674  
**HARI**



**FLAT 221**

Wall light, square, aluminium with frosted glass, up-down, 2xT5 G5 T16 21W, 2x21W max. (excl.), incl. electronic ballast.

W/H/D: 91/5/22 cm  
EEL=A-A+ <sup>1)</sup>

**aluminium** [157202]  
**FLAT 221**



**LASSON**

Wall light, WL-2, A60, square, black, effect created by tensioned textile threads, 2xE27, max. 2x40W (excl.).

W/H/D: 20/60/20 cm  
EEL=E-A++ <sup>1)</sup>

**black** 155310  
**LASSON**



**LASSON 3**

Wall light, WL-3, A60, beige shade, effect created by tensioned textile threads, max. 40W (excl.).

W/H/D: 23/11.5/30 cm  
EEL=E-A++ <sup>1)</sup>

**beige** 155341  
**LASSON 3**



**WORKLIGHT WAVE**

Wall light, WL-1, silver-grey, G5 T16 39W, max 39W (excl.), glare-free thanks to acrylic diffuser, incl. electronic ballast.

W/H/D: 90/18/6 cm  
EEL=A-A+ <sup>1)</sup>

**silver-grey** 157584  
**WORKLIGHT WAVE**



**SOLF T5**

Wall light, white/chrome, aluminium, G5 T16 24W, (excl.).

W/H/D: 58.5/17/10 cm  
EEL=A <sup>1)</sup>

**chrome white** 157611  
**SOLF T5**



**AIXLIGHT R**

Wall light, round, black or white, G53 QR111, max. 50W (excl.), incl. electronic transformer.

W/H/D: 24.5/18/5 cm  
Gimbal-mounted, adjustable: 90°  
EEL=D-A+ <sup>1)</sup>

**black** 159000  
**white** 159001  
**AIXLIGHT R**



**AIXLIGHT R2**

Wall light, semicircular, black or white, G53 QR111, max. 50W (excl.), incl. electronic transformer.

W/H/D: 24.5/18/5 cm  
Gimbal-mounted, adjustable: 90°  
EEL=D-A+ <sup>1)</sup>

**black** 159010  
**white** 159011  
**AIXLIGHT R2**



**AIXLIGHT KARDAFRAME**

Wall light, Wall G53 QR111, aluminium silver-grey, max. 50W (excl.), incl. electronic transformer.

W/H/D: 25.5/19/3 cm  
Gimbal-mounted, adjustable: 90°  
EEL=D-A+ <sup>1)</sup>

**silver-grey** 154262  
**AIXLIGHT KARDAFRAME**



**LED SHELL**

Wall light, round, aluminium black, LED warm white, 3000K, 4W incl.

(Ø / D): 18 / 7,3 cm  
EEL=A-A++ <sup>2)</sup>

**black** 151370  
**LED SHELL**



**KOTAK WALL**

Recessed wall light, square, aluminium silver-grey, frosted diffuser glass, E27 A60, max. 23W (excl.), max. Ø/L: 7/17.5 cm.

W/H/D: 24/20.5/11 cm  
EEL=A-A+ <sup>1)</sup>

**silver-grey 160059**

**KOTAK WALL**



**IVED GOOSE**

Recessed wall light, aluminium silver-grey, power LED, 3000K, 2.2W incl. incl. LED driver, switch and mounting box.

L/W: 9.5/9.5 cm  
Installation Ø/D: 6.8/6.2 cm  
Beam angle: 45°  
EEL=A-A++ <sup>2)</sup>

**silver-grey 146522**

**IVED GOOSE**



**GLENOS LED**

Recessed wall light, square, aluminium silver-grey, warm white, 3000K, 3W

W/H/D: 33.5/6/6 cm  
Recessed W/D: 32.5/6 cm  
EEL=A-A++ <sup>2)</sup>

**silver-grey 112812**

**GLENOS LED**



**Flush-mounted frame**

for GLENOS LED, installation in masonry wall.

**112810**

**Flush-mounted frame**



**NEODISC**

Wall and ceiling light, aluminium brushed/chrome and glass, T8 T29-R T29-R ring tube ESL, 32W (excl.), incl. conventional ballast, chrome glass fastening.

L/W/H: 40/40/6.5 cm  
EEL=A <sup>1)</sup>

**Brushed aluminium 151656**

**NEODISC**



**NEOPAN**

Wall and ceiling light, frosted acrylic glass, white, T8 T32-R ring tube ESL, 40W max. (excl.), incl. electronic ballast.

L/W/H: 55/55/6.5 cm  
EEL=A <sup>1)</sup>

**white 157371**

**NEOPAN**



**NEPRO LINE**

Wall light, aluminium silver-grey and glass, 2 x G5 T16 24W (excl.), incl. electronic ballast.

W/H/D: 70.5/14/20.5 cm  
Tilt range: 350°  
EEL=A <sup>1)</sup>

**silver-grey 157052**

**NEOPO LINE**



**RETROSIX QRB1**

Wall and ceiling light, single head, G53 QR111, black acrylic glass, max. 50W (excl.), incl. electronic transformer.

L/W/H: 23.5/17.5/12.8 cm  
Tilt/Rotation range: 60°/360°  
EEL=D-A+ <sup>1)</sup>

**black 147591**

**RETROSIX QRB1**



**RETROSIX QRB3**

Wall and ceiling light, triple-headed, QR111, black acrylic glass, max. 150 W 3x50W (excl.), incl. electronic transformer.

L/W/H: 56.8/17.5/12.8 cm  
Tilt/Rotation range: 60°/360°  
EEL=D-A+ <sup>1)</sup>

**black 147593**

**RETROSIX QRB3**



**SIGHT 24**

Wall and ceiling light, square, aluminium brushed, 1xG5 T16 24W (excl.), incl. electronic ballast and switch.

L/W/H: 59/4/6 cm  
Tilt range: 350°  
EEL=A <sup>1)</sup>

**aluminium brushed 160206**

**SIGHT 24**



**SIGHT 24**

Wall and ceiling light, square, aluminium brushed, G5 T16 24W (excl.), incl. electronic ballast and switch.

L/W/H: 59/4/6 cm  
Tilt range: 350°  
EEL=A <sup>1)</sup>

**silver-grey 160202**

**SIGHT 24**





**DARIUS**  
Wall and ceiling light, silver-grey, 2x E14 A60, max. 2x40W (excl.) with max. Ø/L: 5/16.5 cm, convex curved glass shade with central grid.  
L/W/H: 32/30/10 cm  
Tilt/Rotation range: 60°/360°  
EEL=A-A++<sup>1)</sup>

**silver-grey** **151635**  
**DARIUS**



**CL 135 T16 R**  
Wall and ceiling light, round, white plastic/aluminium, T5 T16-R, energy saving light, 40W (excl.), incl. electronic ballast.  
Ø/H: 45/10.5 cm  
EEL=A<sup>1)</sup>

**aluminium white** **133760**  
**CL 135 T16 R**



**DRAGAN GRID**  
Wall light, round, aluminium silver-grey/PC, G24, TC-D, 2x26W (excl.), incl. conventional ballast, IP44, suitable for outdoor use. Light creates a corona effect  
Ø/H: 37.5/11.5 cm  
EEL=B<sup>1)</sup>

**silver-grey** **232504**  
**DRAGAN GRID**



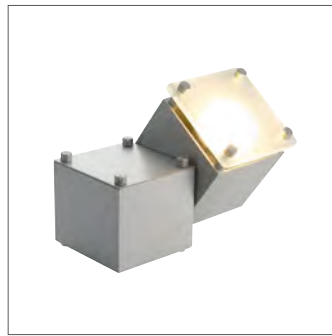
**GLASSA**  
Ceiling light, TC-DEL, square, frosted glass, 2xTC-DE, max. 2x26W (excl.) incl. electronic ballast.  
L/W/H: 39/39/8.4 cm  
EEL=A<sup>1)</sup>

**clear** **155190**  
**GLASSA**



**LIPSY**  
Wall and ceiling light, TC-DEL, square, frosted acrylic glass, 2xT8 ESL 32W/40W max. (excl.) incl. electronic ballast.  
Ø/H: 55/14.5 cm  
EEL=A<sup>1)</sup>

**white** **133723**  
**LIPSY**



**SQUARE DICE**  
Wall and ceiling light, square, aluminium silver-grey, frosted glass, single head, GU10 QPAR51, max. 50W.  
L/W/D: 14/7.5/11.5 cm  
Tilt range: 180 degrees  
EEL=E-A++<sup>1)</sup>

**silver-grey** **151132**  
**SQUARE DICE**



**MEDO**  
Ceiling light, natural aluminium, frosted glass, T5 max. 40W (excl.), incl. electronic ballast.  
Ø/H: 38/9.5 cm  
EEL=A<sup>1)</sup>

**white** **149252**  
**MEDO**



**T5 GRILL UNI**  
Wall and ceiling light, T16, square, white or silver-grey with frosted acrylic glass, 4xG5 T16, 4x24W (excl.), incl. electronic ballast.  
L/W/H: 60.5/60.5/8.5 cm  
EEL=A<sup>1)</sup>

**white** **157091**  
**silver-grey** **157092**  
**T5 GRILL UNI**



**ZENIT**  
Wall and ceiling light, silver-grey, convex curved, frosted glass shade, G24 TCD, 18W max. (excl.), incl. electronic ballast.  
W/H/D: 29.5/25/14 cm  
EEL=B<sup>1)</sup>

**silver-grey** **151932**  
**ZENIT ceiling light**



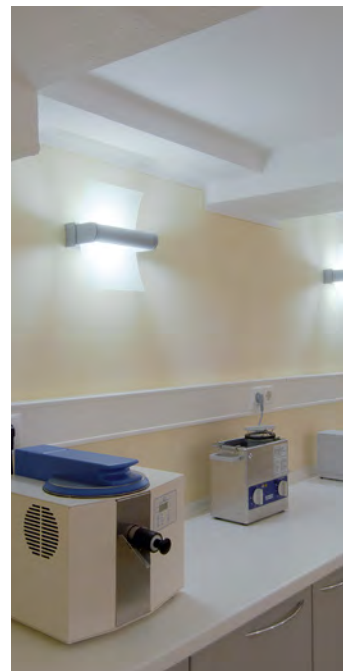
**TEC KARDA**  
Wall and ceiling light, six-headed, silver-grey, 6xG53 QR111, 6x 50W max., light head rotatable and tiltable.  
L/W/D: 49/32/17.5 cm  
EEL=D-A+<sup>1)</sup>

**white** **149146**  
**TEC KARDA**



**DEBASTO**  
Wall and ceiling light, silver-grey, aluminium, dimmable, two-headed, LED 15.4W, 3000K  
H: 13.5 cm  
Beam angle: 30°  
EEL=A-A++<sup>2)</sup>

**silver-grey** **148514**  
**DEBASTO**



**AIXLIGHT MOD**

Wall and ceiling recessed light, silver-grey aluminium, black inside, GU5.3 QR-CBC51, 50W max., gimbal-mounted, adjustable. Transformer required.

L/W/D: 13.5/13.5/10 cm  
EEI=C-A+ <sup>1)</sup>

**silver-grey** **154112**

**AIXLIGHT MOD**

**AIXLIGHT MOD 2**

Wall and ceiling recessed light, two-headed, silver-grey aluminium, black inside, QPAR51, GU10, max. 2x50W (excl.), gimbal-mounted adjustable.

Installation L/W/D: 26/11/12 cm  
L/W/H: 28.5/13.5/11.5 cm  
EEI=E-A++ <sup>1)</sup>

**silver-grey** **154562**

**AIXLIGHT MOD 2**

**AIXLIGHT MOD 2**

Wall and ceiling recessed light, two-headed, silver-grey aluminium, black inside, MR16, max. 2x50W (excl.), gimbal-mounted, adjustable. Transformer required.

Installation L/W/D: 22/11/9.5 cm  
L/W/H: 24/13.5/10 cm  
EEI=C-A+ <sup>1)</sup>

**silver-grey** **154122**

**AIXLIGHT MOD 2**

**AIXLIGHT MOD 2**

Wall and ceiling recessed light, two-headed, silver-grey aluminium, black inside, G53 QR111, max. 2x50W (excl.), gimbal-mounted, adjustable. Transformer required.

Installation L/W/D: 34.5/17/9.5 cm  
L/W/H: 39/20.5/10 cm  
EEI=D-A+ <sup>1)</sup>

**silver-grey** **154022**

**AIXLIGHT MOD 2**

**AIXLIGHT MOD 3**

Wall and ceiling recessed light, three-headed, silver-grey aluminium, black inside, QPAR51, GU10, max. 3x50W (excl.), gimbal-mounted, adjustable.

Installation L/W/D: 38/11/12 cm  
L/W/H: 40.5/13.5/11.5 cm  
EEI=E-A++ <sup>1)</sup>

**silver-grey** **154572**

**AIXLIGHT MOD 3**

**AIXLIGHT MOD 3**

Wall and ceiling recessed light, three-headed, silver-grey aluminium, black inside, G53 QR111, max. 3x50W (excl.), gimbal-mounted, adjustable. Transformer required.

Installation L/W/D: 49/17/9.5 cm  
L/W/H: 52/20.5/10 cm  
EEI=D-A+ <sup>1)</sup>

**silver-grey** **154032**

**AIXLIGHT MOD 3**

**AIXLIGHT MOD 4**

Wall and ceiling recessed light, four-headed, silver-grey aluminium, black inside, GU5.3 QR-CBC51, 4x 50W max., gimbal-mounted adjustable. Transformer required.

Recessed W/D: 20/9.5 cm  
L/W/H: 23/23/10 cm  
EEI=C-A+ <sup>1)</sup>

**silver-grey** **154142**

**AIXLIGHT MOD 4**

**AIXLIGHT MOD 4**

Wall and ceiling recessed light, four-headed, silver-grey aluminium, black inside, G53 QR111, max. 4x50W (excl.), gimbal-mounted, adjustable. Transformer required.

Installation L/W/D: 33/33/9.5 cm  
L/W/H: 36/36/10 cm  
EEI=D-A+ <sup>1)</sup>

**silver-grey** **154042**

**AIXLIGHT MOD 4**

**DOWNUNDER 1**

Recessed wall light, square, natural aluminium, GY6,35 QT12, max. 50W (excl.), glare-free.

W/H: 12/15.5 cm  
Back-housing W/H/D: 10.5/19.3/7.2 cm  
EEI=C-A+ <sup>1)</sup>

**aluminium** **151970**

**DOWNUNDER 1**

**DOWNUNDER 2**

Recessed wall light, square, natural aluminium, G24d-1, ESL, TC-D 13W max. (excl.), glare-free, incl. electronic ballast.

W/H: 22.1/30.5 cm  
Back-housing W/H/D: 20/38.5/9 cm  
EEI=B-A <sup>1)</sup>

**aluminium** **151971**

**DOWNUNDER 2**

**BANGIS**

Mounted downlight, steel/glass, chrome, silver or white, 2xE27, max. 2x11W (excl.) up to max. Ø/L: 4.5/13.5 cm.

L/W/H: 19/7/20.5 cm  
EEI=EEL=A-A++ <sup>1)</sup>

**chrome** **161452**

**silver** **161454**

**white** **161451**

**BANGIS**



**DIABO**

Ceiling light, single head, round, white or chrome, 1xGU10 QPAR51, max. 35W (excl.), with max. L: 5.7 cm

Tilt range 70 degrees  
 Rotation range 340 degrees  
 Ø/H: 7/19.5 cm  
 EEI=E-A++ <sup>1)</sup>

**white** **114551**  
**DIABO**

**chrome** **114552**  
**DIABO**



**DIABO**

Ceiling light, two-headed, round, white or chrome, 2xGU10 QPAR51, max. 2x35W (excl.) with max. L: 5.7 cm

Tilt range 70 degrees  
 Rotation range 340 degrees  
 L/W/H: 19/7/20.5 cm  
 EEI=E-A++ <sup>1)</sup>

**white** **114561**  
**DIABO**

**chrome** **114562**  
**DIABO**

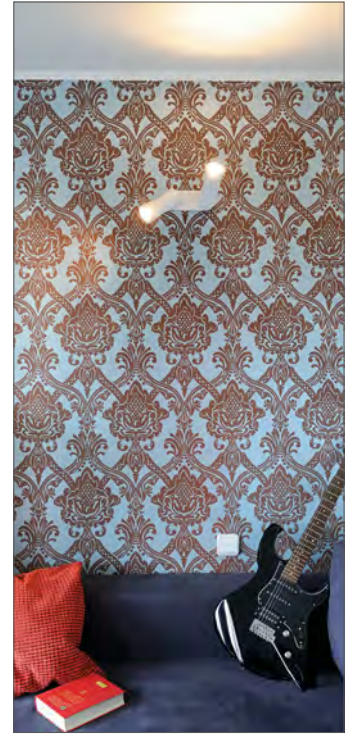


**LASSON**

Ceiling light, square, beige textile shade, iridescent look due to tensioned threads, E27 A60, max. 40W (excl.)

L/W/H: 20/20/33 cm  
 Canopy W/H/D: 10/2/10 cm  
 EEI=E-A+ <sup>1)</sup>

**beige** **155321**  
**LASSON**



**LOUISSE 2**

Ceiling light, QT-DE12, round, steel white, R7s 118mm QT-DE12 200W max. (excl.)

Ø/H: 40/16.5 cm  
 Tilt range: 90°  
 EEI=D-A+ <sup>1)</sup>

**white** **133911**  
**LOUISSE 2**



**TC INDI 255**

Ceiling light, two-headed, TC-LEL, square, white, steel, 2G11 TC-L 55W compact fluorescent lamp 2x55W (excl.), electronic ballast incl.

L/W/H: 58.5/55/6.5 cm  
 EEI=A <sup>1)</sup>

**white** **160791**  
**TC INDI 255**



**LED PANEL**

Mounted ceiling light, square, silver-grey, aluminium, warm white, 3000K, 7.1W incl., leaf springs

Beam angle: 90°  
 L/W/H: 15.2/15.2/7.7 cm  
 EEI=A-A++ <sup>1)2)</sup>

**white** **162491**  
**chrome** **162494**  
**LED PANEL**





**BERET ES111**

Recessed fitting for lamps GU10 QPAR111 230 V max. 75 watt (excl.), thickness of installation material max. 25 mm. with quick fastening for changing lamps.

Ø/H: 16.5/12 cm  
 Installation Ø/D: 15/16 cm  
 Tilt range: 30°  
 EEI=E-A++<sup>1)</sup>

white 162191

**BERET ES111**



**BERET HIT-CE**

Recessed fitting, aluminium, for lamps G12 HQI-T 150W (excl.), electronic ballast and reflector (excl.) incl. clip springs, suitable reflectors (see below).

Ø/H: 16.5/15.5 cm  
 Installation Ø/D: 15.2/15.5 cm  
 Tilt/Rotation range: 30°/30°  
 EEI=A+<sup>1)</sup>

white 162151

**BERET HIT-CE**



**BERET GU6.5**

Recessed fitting, aluminium, for lamps CDM-T 35W (excl.), electronic ballast and reflector (excl.), inc. clip springs, suitable reflectors (see below).

Ø/H: 14/13 cm  
 Installation Ø/D: 13/15.5 cm  
 Tilt/Rotation range: 30°/30°  
 EEI=A+<sup>1)</sup>

white 162141

**BERET GU6.5**



**DIVIS GU6.5**

Recessed fitting, aluminium, for GU6.5 HIT 35W lamps (excl.), thickness of installation material max. 30 mm., electronic ballast and reflector (excl.). Suitable reflectors (see below).

Ø/H: 15.5/15.5 cm  
 Installation Ø/D: 14.8/15.5 cm  
 EEI=A-A+<sup>1)</sup>

white 162121

**DIVIS GU6.5**

silver-grey 162104

**DIVIS GU6.5**



**Recommended accessory**

Reflectors for the BERET 12 and DIVIS GU6.5, chrome-plated aluminium.

Beam angle 20° 162171  
 Beam angle 40° 162173  
 Beam angle 70° 162176

**Reflectors for BERET and Divis**



**Recommended accessory**

Reflectors for the BERET HIT-CE and DIVIS HIT-CE Downlight, chrome-plated aluminium

Beam angle 16° 162161  
 Beam angle 70° 162166

**Reflectors for BERET and Divis**



**LIGHTPOINT**

Recessed fitting, aluminium, for lamps for pin socket bulb G4 QT9 12V (excl.) max. 10W, including 14 cm connection lead

Ø/H: 3/2.5 cm  
 Installation Ø/D: 2.5/2.5 cm  
 EEI=C-A+<sup>1)</sup>

chrome 118012

white 118011

**LIGHTPOINT**



**ESSENS**

Recessed fitting, aluminium/plastic, for lamp TC-DE 26W compact fluorescent lamp (excl.), suitable for through-wiring, includes integrated electronic ballast.

Ø/L/H: 20/36/11.5 cm  
 Installation Ø/D: 18.5/20.5 cm  
 EEI=A<sup>1)</sup>

white 161751

**ESSENS**



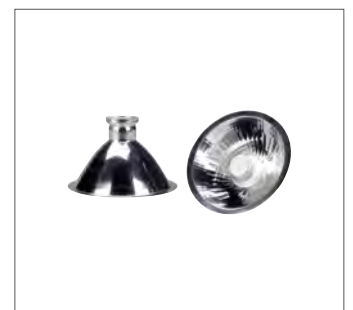
**EVO G12 Downlight**

Recessed fitting for lamp HIT, G12, 35/70/150W (excl.). Excl. ballast and reflector (see right). Connection must be made with an HV cable!

Ø/H: 15.5/15.5 cm  
 Installation Ø/D: 14.8/15.5 cm  
 EEI=A-A+<sup>1)</sup>

white 162224

**EVO G12 Downlight**



**Recommended accessory**

Reflectors for EVO G12 Downlight.

Ø/H: 15.5/15.5 cm  
 Installation Ø/D: 14.8/15.5 cm  
 EEI=A-A+<sup>1)</sup>

Beam angle 15° 162231

Beam angle 25° 162232

**Reflectors for EVO G12 Downlight**



**Gimble PRO ES111**

Recessed fitting 230V for lamps GU10 QPAR111, 75W max. (excl.).

Rotatable/Tilttable: 350°/85°  
Covers Ø: 20.6 cm  
Installation Ø/D: 18.8/17 cm  
EEL=E-A++<sup>1)</sup>

**chrome** **111642**  
**Gimble PRO ES111 Downlight**



**Gimble PRO QRB111**

Recessed fitting 12V for lamps G53 QR111, 50W max. (excl.).

Rotatable/Tilttable: 350°/85°  
Covers Ø: 20.6 cm  
Installation Ø/D: 18.8/17 cm  
EEL=D-A+<sup>1)</sup>

**chrome** **111632**  
**Gimble PRO QRB111 Downlight**



**LUZO 2**

Recessed fitting, aluminium/glass, for lamps G5.3 QR-C51 12V (excl.) max. 50W, excl. transformer, not suitable for use with cool-beam lamps.

Ø: 11.5 cm  
Installation Ø/D: 10.2/12 cm  
EEL=C-A+<sup>1)</sup>

**matt chrome** **113317**  
**metal brushed** **113318**  
**LUZO 2**



**QR-C51 SP**

Recessed fitting, aluminium, for lamps G5.3 QR-C51 12V (excl.) max. 50 W. Not suitable for the use of cool-beam lamps. Excl. transformer.

Tilt range 30°  
Ø/H: 8.6/9 cm  
Installation Ø/D: 7.5/9 cm  
EEL=C-A+<sup>1)</sup>

**chrome** **112098**  
**QR-C51 SP**



**Redit**

Recessed fitting, aluminium/glass, for lamps G5.3 QR-C51 12V (excl.) max. 50W, thickness of installation material 5-20 mm, excl. transformer.

Ø/H: 10.5/11.5 cm  
Installation Ø/D: 9.5/9 cm  
EEL=C-A+<sup>1)</sup>

**white** **111601**  
**Redit**



**INDI REC**

Recessed fitting, steel, for lamps GU5.3 QR-C51 12V (excl.), max. 50W, excl. transformer.

L/W/H: 10/10/11 cm  
Installation Ø/D: 9/12 cm  
EEL=E-A++<sup>1)</sup>

**matt white** **112441**  
**silver-grey/black** **112444**  
**INDI REC**



**INDI REC**

Recessed fitting, two-headed, steel, for lamps GU5.3 QR-C51 12V, (excl.) max. 70W, excl. transformer, tilttable

Tilt range: 70°  
L/W/H: 18/9/14 cm  
Installation L/W/D: 17.5/7/15 cm  
EEL=E-A++<sup>1)</sup>

**matt white** **112461**  
**silver-grey/black** **112464**  
**INDI REC**



**NEW TRIA G12**

Recessed fitting, aluminium brushed, for lamps HQI-T / CDM-T 35W/70W (excl.) max. 70W, includes reflector 38°, excl. transformer.

Tilt range 30°  
L/W/H: 16.5/16.5/20 cm  
Installation Ø/D: 15.5/22 cm  
EEL=A-A+<sup>1)</sup>

**aluminium brushed**  
**NEW TRIA G12**



**NEW TRIA**

Recessed fitting, three-headed, aluminium, for lamps GU5.3 QR-C51 12V (excl.) 3x50W max., excl. transformer

Rotation/Tilt range 360°/30°  
L/W/H: 25.5/9/13 cm  
Installation L/W/D: 24.5/8.2/13 cm  
EEL=C-A+<sup>1)</sup>

**aluminium brushed** **111353**  
**NEW TRIA**

**matt black** **113483**  
**matt white** **113503**  
**NEW TRIA**



**QR-C51 MODULE**

Module for AIXLIGHT PRO 50 installation housing, aluminium/plastic, for lamps GU5.3 QR-C51 12V (excl.) max. 50W, excl. transformer

Ø/H: 7/2.5 cm  
EEL=C-A+<sup>1)</sup>

**silver-grey/black** **115404**  
**QR-C51 MODULE**



**AIXLIGHT PRO 50 1 FRAME**

Installation housing, square, silver-grey/black, L/W/H 10/10/10 cm  
Material :steel. Colour silver-grey / black  
Recessed ceiling mounting. Suitable for any AIXLIGHT PRO 50 module.

**silver-grey/black** **115304**  
**AIXLIGHT PRO 50 1 FRAME**



**AIXLIGHT PRO 1 FRAME**

Installation housing, square, silver-grey/black, L/W/H 17.5/17.5/19 cm.  
Recessed ceiling mounting. Suitable for all AIXLIGHT Pro modules. For hollow ceilings with a thickness between 8 - 29 mm

**silver-grey/black** **115104**  
**AIXLIGHT PRO 1 FRAME**



**TURNO**

Recessed fitting, steel, for lamps GU10 QPAR51 230V (excl.) max. 50W

Tilt range 15°  
 Ø/H: 9.5/11 cm  
 Installation Ø/D: 8.3/14 cm  
 EEI=E-A++<sup>1)</sup>

**white 116101**

**TURNO**

**chrome 116102**  
**matt chrome 116107**

**TURNO**



**Row G12**

Recessed fitting for lamps HQI-T/CDM-T, G12, 35/70W (excl.). Connection must be made with an HV cable! Electronic ballast (excl.), reflector 30° (incl.).

Rotatable/Tilttable: 350°/30°  
 L/W: 18/18 cm  
 Installation Ø/D: 16.5/25 cm  
 EEI=A-A+<sup>1)</sup>

**silver-grey 112551**  
**frosted glass 112551**

**Row G12**



**SQUARE**

Recessed fitting, aluminium/steel/glass, for lamps HQI-T / CDM-T 35W / 70W (excl.). (max. 70W, electronic ballast (excl.), connection must be made with an HV cable! Thickness of installation material max. 15 mm

L/W/H: 19.5/19.5/20 cm  
 Installation L/W/D: 17/17/20 cm  
 EEI=A-A+<sup>1)</sup>

**silver-grey 162044**

**SQUARE**



**SQUARE QR-C51**

Recessed fitting, aluminium, for lamps GX5.3 QR-C51 12V (excl.) max. 50W, excl. transformer.

L/W: 8.7/8.7 cm  
 Installation Ø/D: 7.5/9 cm  
 EEI=A-A+<sup>1)</sup>

**white 113201**  
**silver-grey 113209**

**SQUARE QR-C51**

**chrome 113202**  
**matt chrome 113208**

**SQUARE QR-C51**



**TC-DEL Electronic ballast**

Recessed fitting, aluminium, for lamp G24 TC-DE compact fluorescent lamp 2x 13W (excl.) Electronic ballast incorporated.

Tilt range 75°  
 L/W/H: 23/14.5/13 cm  
 Installation L/W/D: 21/12.5/12 cm  
 EEI=A<sup>1)</sup>

**white 160011**

**TC-DEL Electronic ballast**



**HIT-DE DL 70**

Recessed fitting, aluminium, for lamp HQI-TS / CDM-TD 70W (excl.), operate with suitable ballast only

Tilttable: 75°  
 W/D 14.5/23 cm  
 Installation L/W/D: 12.5/21/12 cm  
 EEI=A-A+<sup>1)</sup>

**silver-grey 150929**  
**white 150921**

**HIT-DE DL 70**



**HIT-DE DL 150**

Recessed fitting, aluminium, for lamp HQI-TS / CDM-TD 150W (excl.), operate with suitable ballast only

Tilttable: 75°  
 W/D 14.5/23 cm  
 Installation L/W/D: 12.5/21/12 cm  
 EEI=A-A+<sup>1)</sup>

**silver-grey 150939**  
**white 150931**

**HIT-DE DL 150**



**TRIA 2**

Recessed fitting, aluminium, for lamps GX5.3 QR-C51 12V (excl.) max. 35W

Tilt range 30°  
 Ø/H: 9/10.5 cm  
 Installation Ø/D: 8/10.1 cm  
 EEI=C-A+<sup>1)</sup>

**silver-grey 111449**

**TRIA 2**

**nickel 111447**

**TRIA 2**



**Twister**

Recessed fitting, aluminium/steel, for lamps GU6.5 CMH-T Super Mini 20 - 35W (excl.), installation material thickness 5-20 mm., electronic ballast (excl.), for suitable reflectors and frame see right

Ø/H: 11/11.5 cm  
 Installation Ø/D: 10/11 cm  
 EEI=A-A+<sup>1)</sup>

**white 112961**

**Twister**

**chrome 112962**

**Twister**

**silver-grey 112964**

**Twister**



**RECOMMENDED ACCESSORIES**

Double frame, aluminium, for Twister, installation material thickness max. 25 mm

L/W/H: 30/15/5.5 cm  
 Installation L/W 28/13.5 cm

**silver-grey 112980**  
**white 112981**

**Frame for TWISTER**



**RECOMMENDED ACCESSORIES**

Reflector for GU6.5 spots.

L/H: 12.2/10 cm

**Beam angle 12° 153721**  
**Beam angle 38° 153723**  
**Beam angle 60° 153726**

**Reflectors for TWISTER**



**RECOMMENDED ACCESSORIES**

Single frame, aluminium, for Twister, installation material thickness max. 25 mm

Ø/H: 15/5.5 cm  
 Installation Ø: 13.5 cm

**square, silver-grey 112974**  
**square, white 112975**

**Frame for TWISTER**

**round, white 112971**

**Frame for TWISTER**





**QUOR 52 Electronic ballast**

Recessed fitting, aluminium/glass, for lamps G24 TC-DE compact fluorescent lamp 2x26W (excl.), electronic ballast incorporated

L/W: 23.5/23.5 cm  
Installation L/W/D: 21/21/13 cm  
EEL=A<sup>1)</sup>

**silver-grey 160029**  
**white 160021**

**QUOR 52 Electronic ballast**



**QUOR 52/G Electronic ballast**

Recessed fitting, aluminium/glass, partially frosted, for lamps G24 TC-DE compact fluorescent lamp 2x26W (excl.), electronic ballast incorporated

L/W: 23.5/23.5 cm  
Installation L/W/D: 300/3.6/3.2 cm  
EEL=A<sup>1)</sup>

**white 160020**

**QUOR 52/G Electronic ballast**



**ECO LED**

Recessed fitting, plastic, 3000K 8.6W, includes installed LED power supply, installation material thickness max. 20 mm

Ø/H: 20/4.8 cm  
Installation Ø/D: 18/4.1 cm  
EEL=A-A++<sup>2)</sup>

**silver-grey 160284**  
**ECO LED**



**ECO LED**

Recessed fitting, plastic, 3000K 12.2W, includes installed LED power supply, installation material thickness max. 20 mm

L/W/H: 24/24/4.7 cm  
Installation L/W/D: 22/21.1/4 cm  
EEL=A-A++<sup>2)</sup>

**silver-grey 160294**  
**ECO LED**



**ECO LED PANEL**

Recessed fitting, aluminium/acrylic, 14W, operate only with suitable LED drivers, 350mA required, installation material thickness 15-22 mm.

Ø/H: 24/3 cm  
Installation Ø/D: 22.8/4 cm  
EEL=A-A++<sup>2)</sup>

**white 162511**  
**silver-grey 162514**  
**ECO LED PANEL**



**ECO LED PANEL**

Recessed fitting, aluminium/acrylic, 12W, operate only with suitable LED drivers, 350mA required, installation material thickness 15-22 mm.

L/W/H: 10.5/10.5/3.2 cm  
Installation L/W/D: 17/17/3.2 cm  
EEL=A-A++<sup>2)</sup>

**silver-grey 162524**  
**ECO LED PANEL**



**LED PANEL 100**

Recessed fitting, plastic, 3000K 8.5W, includes installed LED driver.

L/W/H: 15/15/5 cm  
Installation L/W/D: 14/14/5 cm  
EEL=A-A++<sup>2)</sup>

**silver-grey, warm white LED 160352**  
**silver-grey, white LED 160354**  
**LED PANEL 100**



**LED PANEL 100 SMD**

Recessed fitting, plastic, for lamp SMD LED (incl.) max. 3000K 7.1W, installation material thickness max. 15 mm

L/W/H: 15/15/5.3 cm  
Installation L/W/D: 14/14/6 cm  
EEL=A-A++<sup>2)</sup>

**white 162481**  
**silver-grey 162484**  
**LED PANEL 100 SMD**



**LED PANEL**

Recessed fitting, plastic, 8W, installation material thickness max. 15 mm

Ø/H: 17/5.5 cm  
Installation Ø/D: 15/5.5 cm  
EEL=A-A++<sup>2)</sup>

**white, white LED 160371**  
**white, warm white LED 160372**  
**silver-grey 160382**  
**warm white LED 160382**  
**LED PANEL**



**LELEX 1**

Recessed fitting, aluminium, 1W, operate only with suitable LED drivers, 350mA required Includes 30 cm connection lead.

L/W/H: 6/6/2 cm  
Installation Ø/D: 5.3/3.5 cm  
EEL=A-A++<sup>2)</sup>

**aluminium brushed normal white LED 111870**  
**warm white LED 111872**  
**LELEX 1**



**NEW TRIA DLMI**

Recessed fitting, aluminium, equipped with the Fortimo LED DLMI Module by Philips, installation material thickness max. 20 mm

Rotation/Tilt range 45°/45°  
 Ø/H: 14.1/16.5 cm  
 Installation Ø/D: 12.7/19 cm  
 EEL=A-A++<sup>2)</sup>

**white 4000K 18W** **113731**  
**NEW TRIA DLMI**

**silver-grey 3000K 28W** **113724**  
**silver-grey 4000K 28W** **113734**  
**NEW TRIA DLMI**



**NEW TRIA DLMI**

Recessed fitting, aluminium, 28W, equipped with the Fortimo LED DLMI Module by Philips, installation material thickness max. 20 mm

Rotation/Tilt range 45°/45°  
 L/W/H: 14.1/14.1/16.5 cm  
 Installation Ø/D: 12.7/19 cm  
 EEL=A-A++<sup>2)</sup>

**white 3000K** **113701**  
**white 4000K** **113711**  
**NEW TRIA DLMI**

**silver-grey 3000K** **113704**  
**silver-grey 4000K** **113714**  
**NEW TRIA DLMI**



**SIMIT 20**

Recessed fitting, aluminium, power LED 1W (incl.), includes 15 cm connection lead, operate only with suitable 350mA LED drivers.

Tilt range 30°  
 Ø/H: 5.6/5.5 cm  
 Installation Ø/D: 4.9/6.5 cm  
 EEL=A-A++<sup>1)2)</sup>

**metal brushed**  
**SIMIT 20**



**TRITON GIMBLE**

Recessed fitting, aluminium, 3x1W, thickness of installation material max. 20 mm

Rotation/Tilt range 45°/45°  
 Ø/H: 9.1/9 cm  
 Installation Ø/D: 7.8/9 cm  
 EEL=A-A++<sup>2)</sup>

**white**  
**warm white LED** **113602**  
**TRITON GIMBLE**

**silver anodised**  
**neutral white LED 113610**  
**warm white LED** **113612**  
**TRITON GIMBLE**





**TRITON HORN 3 SET**

Recessed fitting, steel/plastic, 3000K 5.1W, includes LED driver, thickness of installation material max. 20 mm

Ø/H: 8.5/4.3 cm  
Installation Ø/D: 7.7/4.5 cm  
EEL=A-A++<sup>2)</sup>

white  
Beam angle 12° 113761  
Beam angle 30° 113771

**TRITON HORN 3 SET**



**TRITON HORN 4 SET**

Recessed fitting steel/plastic, 3000K 5.1W, includes LED driver, thickness of installation material max. 20 mm

Ø/H: 9/7 cm  
Installation Ø/D: 8/7.5 cm  
EEL=A-A++<sup>2)</sup>

white  
Beam angle 12° 113781  
Beam angle 30° 113791

**TRITON HORN 4 SET**



**TRITON 6 GIMBLE Downlight**

Recessed fitting, aluminium, power LED 6x1W, includes 30 cm connection lead, a suitable constant current driver providing 350mA is required to operate the downlight, thickness of installation material max. 20 mm

Rotation/Tilt range: 350°/45°  
Ø/H: 12/6 cm  
Installation Ø/D: 10.8/7.2 cm  
EEL=A-A++<sup>2)</sup>

white  
neutral white LED 113620  
warm white LED 113622

**TRITON**

silver anodised  
warm white LED 113632

**TRITON**



**LED DISK HORN DL Downlight**

Recessed fitting, aluminium/plastic, Philips Fortimo LED Disk Module (incl.) 2700K 12W, installation material thickness max. 20 mm

Ø/H: 12/10 cm  
Installation Ø/D: 10.2/10 cm  
EEL=A-A++<sup>2)</sup>

silver 160544

**LED DISK HORN DL Downlight**



**TRITON**

Recessed fitting, aluminium, power LED 6x3W (incl.), includes 30 cm connection lead, operate only with suitable 700mA LED drivers.

Rotation/Tilt range: 20°/60°  
Ø/H: 12/10 cm  
Installation Ø/D: 10.8/13.5 cm  
EEL=A-A++<sup>2)</sup>

white , warm white LED 113642  
silver, anodised, neutral white LED 113650  
silver, anodised. warm white. LED 113652

**TRITON**



**BOOST TURNO**

Recessed fitting, aluminium/plastic, power LED 3000K 9W (incl.), operate with suitable 500 mA drivers only, thickness of installation material max. 25 mm

Tilt range 18°  
Ø/H: 9.2/13.7 cm  
Installation Ø/D: 8.2/13.5 cm  
EEL=A-A++<sup>2)</sup>

silver-grey 160624

**BOOST TURNO**



**BOOST TURNO SQUARE**

Recessed fitting, aluminium, COB LED (incl.), 6W, operate only with suitable LED drivers, 480mA required, thickness of installation material max. 25 mm

Tilt range 18°  
L/W/H: 9.2/9.2/13.5 cm  
Installation Ø/D: 8.2/13.5 cm  
EEL=A-A++<sup>2)</sup>

silver-grey 160664

**BOOST TURNO SQUARE**



**LED ALUMINIUM DOWNLIGHT**

Recessed fitting, aluminium, power LED 3000K 3W (incl.), operate with suitable 700 mA drivers only, Item No. 464200.

Ø/H: 7.3/1.5 cm  
Installation Ø/D: 5.7/11 cm  
EEL=A-A++<sup>2)</sup>

aluminium brushed 114802

**ALUMINIUM DOWNLIGHT**





**EURO CUBE DLMI**

Spot for 3 circuit track, aluminium, black, LED module 28W. The mounted adapter is suitable for all conventional 3 circuit tracks.

W/H: 15/21 cm  
 Head W/H/D: 12.5/12.5/12 cm  
 Tilt/Rotation range: 90°/170°  
 EEI=A-A++ <sup>2)</sup>

**black 2000lm, 3000K 152720**  
**black 2000lm, 4000K 152730**

**EURO CUBE DLMI**



**EURO CUBE DLMI**

Spot for 3 circuit track, aluminium, silver-grey, LED module. The mounted adapter is suitable for all conventional 3 circuit tracks.

W/H: 15/21 cm  
 Head W/H/D: 12.5/12.5/12 cm  
 Tilt/Rotation range: 90°/170°  
 EEI=A-A++ <sup>2)</sup>

**silver-grey 1100lm, 4000K 14W 152714**

**EURO CUBE DLMI**

**silver-grey 2000lm, 3000K 28W 152724**

**EURO CUBE DLMI**



**EURO CUBE DLMI**

Spot for 3 circuit track, aluminium, white, LED module 28W. The mounted adapter is suitable for all conventional 3 circuit tracks.

W/H: 15/21 cm  
 Head W/H/D: 12.5/12.5/12 cm  
 Tilt/Rotation range: 90°/170°  
 EEI=A-A++ <sup>2)</sup>

**white 2000lm, 3000K 152721**  
**white 2000lm, 4000K 152731**

**EURO CUBE DLMI**



**ENOLA\_C**

Spot for 3 circuit track, aluminium, COB LED 20.5W, 3000K, incl. LED driver. The mounted adapter is suitable for all conventional 3 circuit tracks.

L/W/H: 22.2/16/15.5 cm  
 Tilt/Rotation range: 90°/350°  
 EEI=A-A++ <sup>2)</sup>

**white 35° 152461**

**ENOLA\_C**



**D-RECTION**

Spot for 3 circuit track, aluminium, for lamps GU6.5, CMH-TC (excl.) 20W, incl. electronic ballast, deco ring and 3 circuit adapter. Excl. reflector! The mounted adapter is suitable for all conventional 3 circuit tracks.

Rotation/Tilt range: 350/180°  
 L/W/H: 24/9.5/19 cm  
 EEI=A-A+ <sup>1)</sup>

**black 153700**  
**chrome 153702**

**D-RECTION**



**EURO SPOT**

Spot for 3 circuit track, aluminium, black, Philips Fortimo LED Disk Module. The mounted adapter is suitable for all conventional 3 circuit tracks.

W/H: 14/22 cm  
 Head W/H/D: 12.5/12.5/12 cm  
 Tilt/Rotation range: 100°/350°  
 Beam angle: 60°  
 EEI=A-A++ <sup>2)</sup>

**12W, 2700K 153490**

**EURO SPOT**



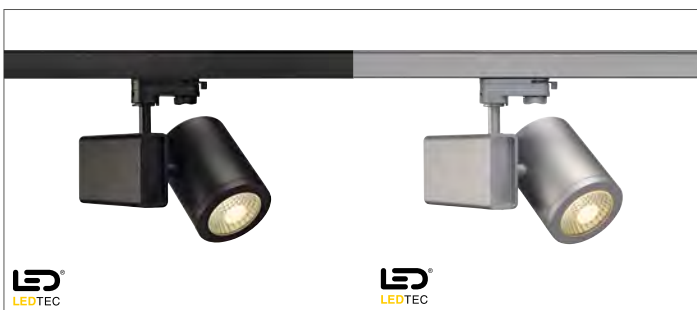
**EURO SPOT**

Spot for 3 circuit track, aluminium, silver-grey, Philips Fortimo LED Disk Module. The mounted adapter is suitable for all conventional 3 circuit tracks.

W/H: 14/22 cm  
 Head W/H/D: 12.5/12.5/12 cm  
 Tilt/Rotation range: 100°/350°  
 Beam angle: 60°  
 EEI=A-A++ <sup>2)</sup>

**11W, 4000K 153994**

**EURO SPOT**



**ENOLA\_C**

Spot for 3 circuit track, aluminium, COB LED 20.5W, 3000K, incl. LED driver. The mounted adapter is suitable for all conventional 3 circuit tracks.

L/W/H: 22.2/16/15.5 cm  
 Tilt/Rotation range: 90°/350°  
 EEI=A-A++ <sup>2)</sup>

**black 35° 152460**

**ENOLA\_C**

**silver-grey 35° 152464**

**ENOLA\_C**







**DOMELED**

Spot for 3 circuit track, aluminium, power LED 6x3W 3000K, incl. LED driver. The mounted adapter is suitable for all conventional 3 circuit tracks.

W/H/D: 22/ 18.5/3.8 cm  
Tilt/Rotation range: 330°/330°  
EEL=A-A++ <sup>2)</sup>

**silver-grey** 153502  
**DOMELED**



**STRUCTURN**

Spot for 3 circuit track, aluminium, black, COB LED 12,8 W 3000K. The mounted adapter is suitable for all conventional 3 circuit tracks.

L/W/H: 16.5/4/11.5 cm  
EEL=A-A++ <sup>2)</sup>

**black 38°** 152900  
**black 60°** 152910  
**STRUCTURN**



**STRUCTURN**

Spot for 3 circuit track, aluminium, silver-grey, COB LED 12.8 W 3000K. The mounted adapter is suitable for all conventional 3 circuit tracks.

L/W/H: 16.5/4/11.5 cm  
EEL=A-A++ <sup>2)</sup>

**silver-grey 38°** 152904  
**silver-grey 60°** 152914  
**STRUCTURN**



**STRUCTURN**

Spot for 3 circuit track, aluminium, white, COB LED 12.8 W 3000K. The mounted adapter is suitable for all conventional 3 circuit tracks.

L/W/H: 16.5/4/11.5 cm  
EEL=A-A++ <sup>2)</sup>

**white 60°** 152911  
**STRUCTURN**



**TRACKSPOT**

Spot for 3 circuit track, aluminium, black, power LED 3x3W 3000K, incl. LED driver. The adapter is suitable for all conventional 3 circuit tracks

W/H/D: 22/ 18.5/3.8 cm  
Tilt/Rotation range: 90°/350°  
EEL=A-A++ <sup>2)</sup>

**black** 152500  
**TRACKSPOT**



**DIABO**

Spot for 3 circuit track, aluminium, for lamps GU10 QPAR51 230V (excl.) max. 50W, with suitable adapter for the 3 circuit high voltage track system, the mounted adapter is suitable for all current 3 circuit tracks.

Rotation/Tilt range: 350°/90°  
L/H: 11/16 cm  
EEL=A-A+ <sup>1)</sup>

**black** 152250  
**silver-grey** 152254  
**DIABO**



**EURO SPOT**

Spot for 3 circuit track, aluminium, for lamps E27 ESL (excl.) max. 23W, with suitable adapter for the 3 circuit high voltage track system, maximum dimensions of energy saving lamp (Ø / L): 6 / 17.5 cm

Rotation/Tilt range: 350°/90°  
L/W: 32/16.5 cm  
EEL=A-A++ <sup>1)</sup>

**silver-grey** 153464  
**EURO SPOT**

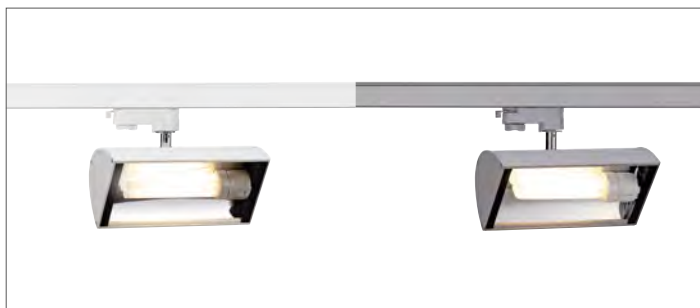


**EURO SPOT**

Spot for 3 circuit track, aluminium, for lamps GU5.3 QR-C51 12V (excl.) max. 50W, incl. electronic ballast and 3 circuit adapter. The mounted adapter is suitable for all conventional 3 circuit tracks.

Rotation/Tilt range: 350°/70°  
L/W: 28/11.5cm  
EEL=C-A+ <sup>1)</sup>

**white** 153481  
**EURO SPOT**



**NEPRO 2**

Spot for 3 circuit track, aluminium/stainless steel, for lamp G24 TC-D compact fluorescent lamp 26W (excl.), incl. suitable adapter, incl. integrated conventional ballast, the mounted adapter is suitable for all current 3 circuit tracks.

Rotation/Tilt range: 350°/20°  
L/W/H: 22.2/11.6/13.5 cm  
EEL=B <sup>1)</sup>

**white** 153551  
**silver-grey** 153554  
**NEPRO 2**



**AERO**

Spot, aluminium/plastic, with suitable adapter for the 3 circuit high voltage track system, for lamps GU10 QPAR51 230V (excl.) max. 50W, the mounted adapter is suitable for all 3 circuit tracks.

Rotation/Tilt range: 90°/350°  
 L/W/H: 9/9/14.5 cm  
 EEI=E-A++<sup>1)</sup>

**white** 151011

**AERO**



**KARDATRACK**

Spot, aluminium, with suitable adapter for the 3 circuit high voltage track system, for lamp G53 QR111 12V (excl.) max. 4x50W, the mounted adapter is suitable for all conventional 3 circuit tracks.

Tilt range: 180°  
 L/W/H: 86.5/19/18 cm  
 EEI=D-A+<sup>1)</sup>

**silver-grey** 154512

**KARDATRACK**



**KALU TRACK**

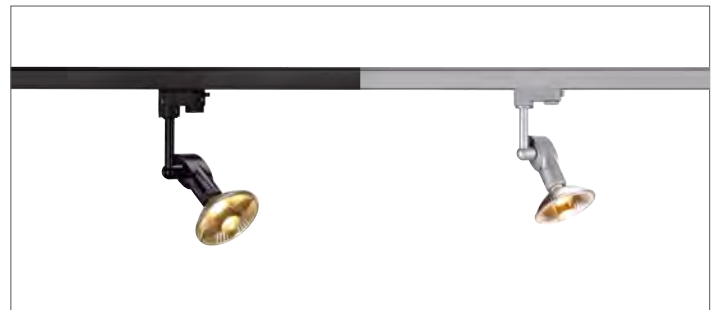
Spot, aluminium, with suitable adapter for the 3 circuit high voltage track system, for lamp Microlynx 230V 9W (excl.), the mounted adapter is suitable for all conventional 3 circuit tracks.

Rotation/Tilt range: 350°/90°  
 L/H: 13.5/17 cm  
 EEI=B-A++<sup>1)</sup>

**black** 153590

**silver-grey** 153594

**KALU TRACK**



**LUNA 1**

Spot, aluminium, with suitable adapter for the 3 circuit high voltage track system, for lamp GU10 QPAR51 230V (excl.) max. 75W, the mounted adapter is suitable for all 3 circuit tracks.

Rotation/Tilt range: 350°/320°  
 L/H: 14/14.5 cm  
 EEI=E-A++<sup>1)</sup>

**black** 152280

**silver-grey** 152282

**LUNA 1**



**NAVIGATOR**

Spot for 3 circuit track, aluminium, for lamp CDM-TC 70W G8.5 (excl.) 70W, incl. electronic ballast and 3 circuit adapter. The mounted adapter is suitable for all conventional 3 circuit tracks. (Reflector see right).

Rotation/Tilt range: 350°/70°  
 L/W/H: 37.5/14/21.5 cm  
 EEI=C-A+<sup>1)</sup>

**silver-grey** 153164

**NAVIGATOR**

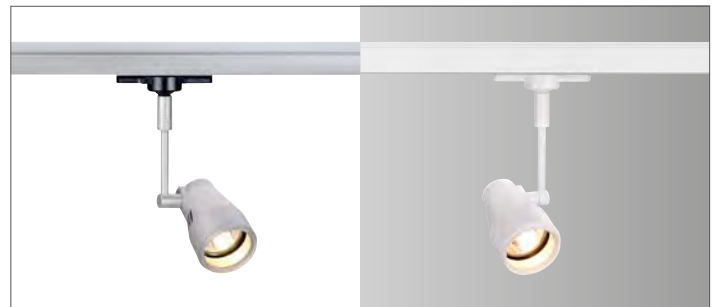


**Recommended accessory**

Suitable reflector for Navigator G8.5 article no. 153164 153164, aluminium.

**aluminium** [153176]

**REFLECTOR FOR NAVIGATOR**



**Q-TECH**

Spot for 3 circuit track, aluminium, for lamps GU10 QPAR51 230V (excl.) max. 50W, incl. suitable adapter. The mounted adapter is suitable for all conventional 3 circuit tracks.

Rotation/Tilt range: 350°/90°  
 L/W/D/ Ø: 25.5/8/6/6 cm  
 EEI=E-A++<sup>1)</sup>

**white** 153301

**silver-grey** 153304

**Q-TECH**



**RECOMMENDED ACCESSORY**

Deco ring, metal, for SLEEK G12 spot to be attached to the reflector.

black	153670
white	153671
silver-grey	153674

**DECORATIVE RING**



**RECOMMENDED ACCESSORY**

Reflector, aluminium, for SLEEK G12 spots.

Beam angle 16°	153681
Beam angle 30°	153682
Beam angle 52°	153684

**REFLECTOR**



**EUTRAC**

Universal point outlet, aluminium

Ø/H: 12.5/6.2 cm  
Load: max. 10 kg

white	145741
silver-grey	145744

**EUTRAC**



**LAMP ADAPTER**

Aluminium/plastic, for 3-circuit track/ Eutrac 3-circuit recessed track, mechanical.

L/W/H: 6.5 / 3.1 / 1.8 cm  
Load: max. 10 kg

white	144981
-------	--------

**LAMP ADAPTER**



**SLEEK SPOT**

Spot for 3 circuit track, aluminium, for lamp G12 HQI-T / CDM-T 70W (excl.) 70W, with suitable adapter for the 3 circuit high voltage track system, incl. integrated electronic ballast, incl. reflector

Rotation/Tilt range: 350°/90°

L/W/H: 20.5/16.8/13.5 cm

EEL=A-A+<sup>1)</sup>

black	
Beam angle: 52°	153660

**SLEEK SPOT**

silver-grey	
Beam angle: 16°	153644
Beam angle: 30°	153654
Beam angle: 52°	153664

**EURO SPOT**

white	
Beam angle: 16°	153641
Beam angle: 30°	153651
Beam angle: 52°	153661

**EURO SPOT**



**D-RECTION**

Rotatable and tiltable high voltage spot, aluminium/glass, for 1 circuit track, for lamp CMH-T Super Mini 35W (excl.), includes integrated electronic ballast and deco ring.

Rotation/Tilt range: 350°/180°

L/W/H: 24 / 9.5 / 16.5 cm

EEL=A-A+<sup>1)</sup>

white	143871
-------	--------

**D-RECTION**



**DIABO**

Rotatable and tiltable high voltage spot, aluminium, for 1 circuit track, for lamp GU10 QPAR51 230V (excl.) max.35W,

Rotation/Tilt range: 350°/90°

L/H: 11/12.5 cm

EEL=E-A++<sup>1)</sup>

silver-grey	143344
-------------	--------

**DIABO**



**LUNA**

Rotatable and tiltable high voltage spot, aluminium, for 1 circuit track, for lamp GU10 QPAR51 /QPAR111 230V (excl.) max. 75W.

Rotation/Tilt range: 350°/320°

W/H: 17 / 14 / 14.5 cm

EEL=E-A++<sup>1)</sup>

silver-grey	143482
-------------	--------

**LUNA**



**PIRUS**

Pendant, steel/glass, for 1 circuit track, for lamp E14 ESL (excl.) max. 11W, maximum size of energy-saving bulb (Ø/L): 3.8/11.7 cm, red textile coated cable.

Pendant length: 150 cm

EEL=E-A++<sup>1)</sup>

chrome	143601
--------	--------

**PIRUS**



**KALU TRACK**

Rotatable and tiltable spot, aluminium, with suitable adapter for 1 circuit track, for lamp Microlynx GX52 230V (excl.) max. 9W. Incl. 1 circuit adapter.

Rotation/Tilt range: 350°/90°  
L/H: 12/15 cm  
EEI=B-A++<sup>1)</sup>

**white** 143491

**KALU TRACK**



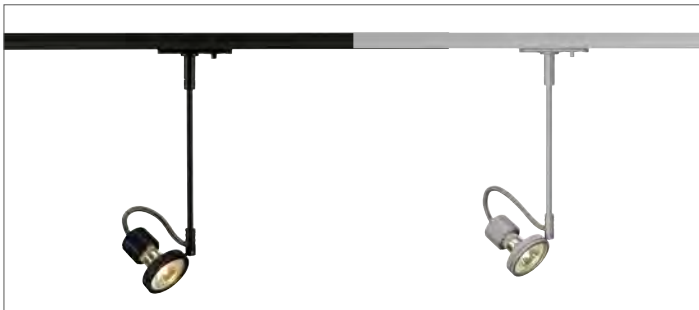
**EURO SPOT LED DISK 800**

LED spot for 1 circuit track, Philips Fortimo LED Disk Module (excl.) 12W, 2700K.

Rotation/Tilt range: 350°/100°  
L/H: 14/25 cm  
EEI=A-A++<sup>2)</sup>

**white** 143831

**EURO SPOT LED DISK 800**



**KASPO**

Rotatable and tiltable high-voltage spot, steel/aluminium, with suitable adapter for 1 circuit track, for lamp GU10 QPAR51 230V (excl.) max.50W

Rotation/Tilt range: 350°/180°  
Ø/H: 5.5/28.5 cm  
Pendant length: 5 cm  
EEI=E-A++<sup>1)</sup>

**black** 143420

**silver-grey** 143422

**KASPO**



**SLEEK SPOT MR16**

Spot for 1 circuit track, for lamp G5.3 QR-C51, 50W max. (excl.). Only suitable for operation with direct reflector lamps. Incl. electronic transformer, deco ring and 1 circuit adapter.

Rotation/Tilt range: 355°/45°  
L/W/H: 11 / 12.5 / 8.5 cm  
EEI=C-A+<sup>1)</sup>

**white** 143791

**SLEEK SPOT MR16**



**LED TRACKSPOT**

LED spot, aluminium/plastic, for 1 circuit track, power LED 3000K 3W (excl.) 9W, incl. integrated LED driver.

Rotation/Tilt range: 315°/90°  
L/W/H: 9 / 7.3 / 14.5 cm  
EEI=A-A++<sup>2)</sup>

**white** 143881

**LED TRACKSPOT**



**Q-Tech® SPOT MR16**

Spot for 1 circuit track, for lamp G53 QR111 (excl.) max. 50W, only suitable for operation with direct reflector lamps, incl. electronic ballast and 1 circuit adapter.

Rotation/Tilt range: 350°/90°  
Length: 17.5 cm  
EEI=C-A+<sup>1)</sup>

**silver-grey** 143684

**Q-Tech® SPOT MR16**



**Q-Tech® SPOT QRB111**

Spot for 1 circuit track, for lamp G53 QR111 (excl.) max. 100W, incl. electronic ballast and 1 circuit adapter.

Rotation/Tilt range: 350°/90°  
Length: 31.5 cm  
EEI=D-A+<sup>1)</sup>

**white** 143651

**Q-Tech® SPOT QRB111**



**SOPRANA**

High voltage pendant SOPRANA PD-3 with suitable adapter for the 1 circuit high voltage track system. Textile/PS/steel, for 1 circuit track, for lamp E27 A60 230V (excl.) max. 40W, bulb maximum length 14.5 cm.

Ø/H: 15.5/40 cm  
Pendant length: 150 cm  
EEI=E-A++<sup>1)</sup>

**beige textile shade**

**silver-grey adapter** 143924

**white adapter** 143921

**SOPRANA**

**white textile shade**

**silver-grey adapter** 143914

**white adapter** 143911

**SOPRANA**



**BIBA 3**

Pendant for EASYTEC II, chrome, frosted glass, E14 max. 60W (excl.), incl. adapter for the EASYTEC II track system.

Glass Ø/H: 13/26 cm  
 Pendant L: 150 cm  
 EEL=E-A++<sup>1)</sup>

**chrome** 185521

**BIBA 3**

**GX53 SPOT**

Spot for EASYTEC II, chrome, steel, energy saving light, Microlynx GX53 230V 9W, max. 13W (excl.), incl. adapter for the EASYTEC II track system.

L/W/H: 21/10.5/9 cm  
 Ø: 9 cm  
 Tilt/Rotation range: 350°/180°  
 EEL=B-A++<sup>1)</sup>

**chrome** 185742

**GX53 SPOT**



**TRACK for LINUX LIGHT**

Carrier track for the LINUX LIGHT low voltage track system, aluminium chrome, incl. 2 end caps, 200 cm.

**chrome 200 136222**

**TRACK for LINUX LIGHT**

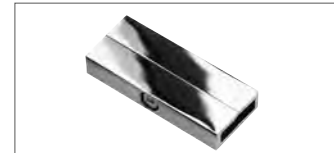


**TRACK for LINUX LIGHT**

Carrier track for the LINUX LIGHT low voltage track system, aluminium silver-grey, incl. 2 end caps, 200 cm.

**silver-grey 200 138222**

**TRACK for LINUX LIGHT**

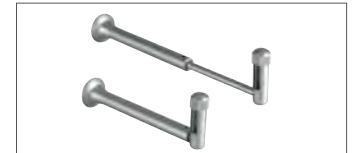


**INSULATING CONNECTOR**

Insulating and rigid connector for the LINUX LIGHT low-voltage track system, chrome.

**chrome 136232**

**INSULATING CONNECTOR**



**WALL BRACKET**

Telescopic wall bracket for LINUX LIGHT, flexible, silver-grey, adjustable from 12.5-21 cm.

**silver-grey 138270**

**WALL BRACKET**



**FLEXIBLE CONNECTOR L**

Flexible connector L for the LINUX LIGHT low voltage track system, chrome, max. 25A, tilt range approx. 240°.

**chrome 136402**

**FLEXIBLE CONNECTOR L**



**CEILING SUSPENSION**

Telescopic ceiling suspension for LINUX LIGHT, aluminium, adjustable from 17.5-26 cm.

**chrome 136260**

**CEILING SUSPENSION**



**CEILING SUSPENSION**

Short ceiling suspension for LINUX LIGHT, aluminium, 6.5 cm.

**chrome 136240**  
**silver-grey 138240**

**CEILING SUSPENSION**



**CEILING SUSPENSION**

Long ceiling suspension for LINUX LIGHT, aluminium, 10 cm.

**chrome 136246**

**CEILING SUSPENSION**

**silver-grey 138246**

**CEILING SUSPENSION**



**LONG CONNECTOR**

Long connector, rigid, for LINUX LIGHT low voltage track system, silver-grey, max. 25A.

**chrome 136202**

**LONG CONNECTOR**



**SHORTBOX TRANSFORMER**

Electronic 12V low voltage transformer for LINUX LIGHT, chrome, plastic, max. 105W. L/W/H: 18/5/10 cm, for tracks up to 2 m.

**chrome 136192**  
**silver-grey 138192**

**SHORTBOX TRANSFORMER**

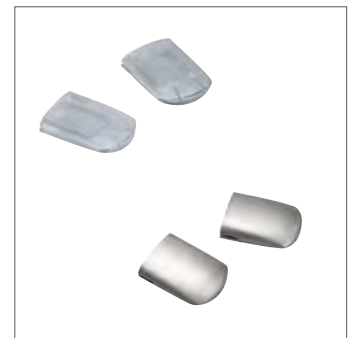


**CEILING SUSPENSION**

Extra long ceiling suspension for LINUX LIGHT, aluminium, 21 cm.

**silver-grey 138262**

**CEILING SUSPENSION**



**END CAPS**

For LINUX LIGHT, chrome, clear plastic, 2 pce.

**chrome 138380**  
**silver-grey 138280**

**CEILING SUSPENSION**

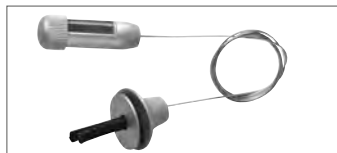


**WIRE HOLDERS**

Wire holders for LINUX LIGHT, chrome, 2.5 m

**chrome** 136250

**WIRE HOLDERS**



**WIRE HOLDERS**

Wire holders for LINUX LIGHT, silver-grey, 250cm

**silver-grey** 138250

**WIRE HOLDERS**



**FEED-IN FOR LINUX LIGHT**

Cable feed-in for LINUX LIGHT low voltage track system, chrome, max. 25A, Ø/H: 2.5/3 cm, cable L: 60cm

**chrome** 136252

**FEED-IN for LINUX LIGHT**



**FEED-IN FOR LINUX LIGHT**

Cable feed-in for LINUX LIGHT low voltage track system, silver-grey, max. 25A, Ø/H: 2.5/3 cm, cable L: 60 cm

**silver-grey** 138252

**FEED-IN for LINUX LIGHT**



**ANILA Spot MR16**

Spot with suitable adapter for LINUX LIGHT, QR51, chrome, clear glass, GU5.3 QR-C51 max. 50W (excl.).

Ø/H: 7/21 cm  
Tilt/Rotation range: 180°/350°  
EEL=C-A+<sup>1)</sup>

**silver-grey** 136174

**ANILA Spot MR16**



**TONGA**

Pendant with suitable adapter for LINUX LIGHT, QT12, white/silver-grey, ceramic shade, GY6.35 QT12 max. 50W (excl.).

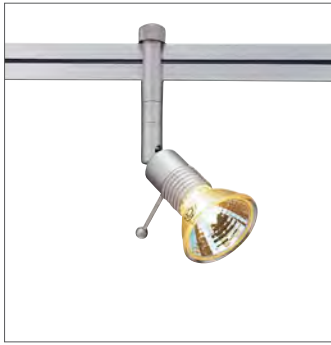
Ø/H: 15/22 cm  
Pendant length: 150 cm  
EEL=C-A+<sup>1)</sup>

**white** 138144

**TONGA**





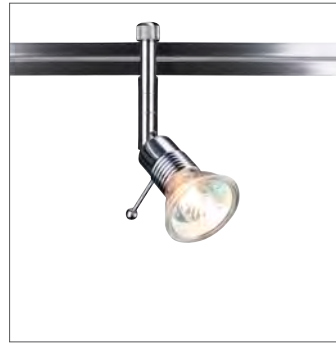


**SYROS**

Spot with suitable adapter for LINUX LIGHT, GX5.3 QR-C51, round, silver-grey, aluminium, MR16 max. 50W (excl.).

Ø/H: 5.5/15 cm  
Tilt/Rotation range: 90°/350°  
EEL=C-A+ <sup>1)</sup>

**silver-grey 138212**  
**SYROS**



**SYROS**

Spot with suitable adapter for LINUX LIGHT, GX 5.3 QR-C51, round, chrome, aluminium, MR16 max. 50W (excl.).

Ø/H: 5.5/15 cm  
Tilt/Rotation range: 90°/350°  
EEL=C-A+ <sup>1)</sup>

**chrome 136212**  
**SYROS**



**LIKA**

Spot with suitable adapter for LINUX LIGHT, GX5.3 QR-C51, silver-grey, aluminium, max. 50W (excl.).

Ø/H: 8/15 cm  
Rotation range: 350°  
EEL=C-A+ <sup>1)</sup>

**silver-grey 138372**  
**LIKA**



**LIGHT EYE**

Spot with suitable adapter for LINUX LIGHT, GU5.3 QR-C51, chrome, max. 50W (excl.).

W/H: 10/18.5 cm  
Tilt/Rotation range: 90°/350°  
EEL=C-A+ <sup>1)</sup>

**chrome 136184**  
**LIGHT EYE**







**END CAPS**

End cap set for the WAVE low voltage track system, 2 pce. silver-grey plastic.

silver-grey **138807**

**END CAPS**



**CEILING SUSPENSION**

Adjustable ceiling suspension for the WAVE low-voltage track system, chrome 25 cm. Adjustable from 16-28 cm.

chrome **138806**

**CEILING SUSPENSION**

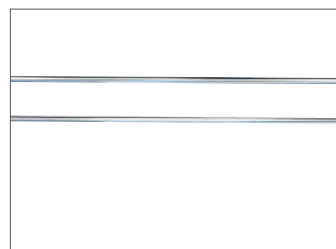


**CEILING SUSPENSION**

Non-adjustable ceiling suspension for the WAVE low-voltage track system, chrome 13.4 cm.

chrome **138801**

**CEILING SUSPENSION**

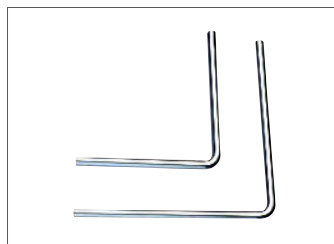


**SYSTEM ROD**

System rod set for the WAVE low-voltage track system, 25A chrome. 2 pce. 70 cm

chrome **138800**

**SYSTEM ROD**



**ANGLE 90°**

90° ANGLE for the WAVE low voltage track system, 25A, chrome,

Inner angle 85 cm **138804**

Outer angle 115 cm **138805**

**ANGLE 90°**



**CONNECTORS**

Rigid connector set for the WAVE low-voltage track system, chrome, 10-pack.

chrome **138809**

**CONNECTORS**



**DIRECT FEED-IN**

Direct feed-in for the WAVE low voltage track system, copper chrome. H/W: 3.9/3.2 cm.

chrome **138802**

**DIRECT FEED-IN**

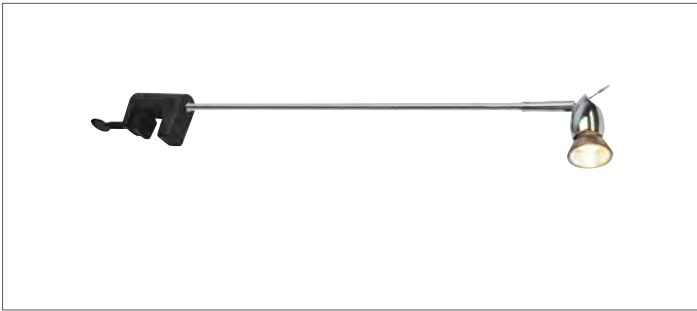


**CABLE FEED-IN SET**

Cable feed-in set for the WAVE low voltage track system, 25A, chrome, 2 pce. 25 cm

chrome **138808**

**CABLE FEED-IN SET**



**NEAT**

Display light, aluminium, lamp GU10 QPAR51, max. 50W (excl.), incl. 50 cm rod, 150 cm connection lead, display clamp and plug.

L/W/H: 6/4/68 cm  
 Tilt/Rotation range: 90°/350°  
 Clamping range: 0.5-4.9 cm  
 EEL=E-A++<sup>1)</sup>

**chrome** 170422  
**NEAT**



**LUNA**

Display light, GU10 QPAR111, white or silver-grey, aluminium, max. 75W (excl.), chrome clamp, incl. 180 cm connection lead with switch and plug.

Ø/H: 23.5/16.5 cm  
 Tilt/Rotation range: 340°/340°  
 L/H: 54/11.4 cm  
 Head L/W/H: 3.8/3.8/11.4 cm  
 Rod L: 50 cm  
 EEL=E-A++<sup>1)</sup>

**white** 146341  
**LUNA** **silver-grey** 146344  
**LUNA**



**SURA**

Spot for the low voltage wire system, QT12, chrome, frosted glass, lamp pin-socket bulb GY6.35 max. 50W (excl.), cable distance max. 15 cm

W/H/D: 16.5/12/12 cm  
 Ø: 6.5 cm  
 EEL=D-C<sup>1)</sup>

**chrome/white** 181232  
**SURA**



**WIRE WALL FASTENING**

Movable wall fastening for the low voltage wire system, 2 pce. (not ill.)

L/base Ø: 3.5/4 cm

**chrome** 181502  
**WIRE wall fastening**



**BIMA**

Display light, QPAR51, chrome, aluminium, GU10 QPAR51, max. 35W (excl.), incl. 150 cm connection lead with switch and plug.

L/W/H: 53/7.5/12 cm  
 Tilt/Rotation range: 180°/360°  
 Clamping range, wall: 1-4 cm  
 Rod L: 44 cm  
 EEL=E-A++<sup>1)</sup>

**chrome** 146492  
**BIMA**



**TRUST 30 / 60**

Floor stand, stainless steel 304, E27 ESL, max. 11W (excl.). IP55, suitable for outdoor use. 230V mains supply.

Ø/H: 6/61 cm  
EEL=A-A+<sup>1)</sup>



**NEW POL**

Garden light, silver-grey, E27 ESL, max. 25W (excl.). The special design creates a glare-free light. IP54, suitable for outdoor use.

Ø/H: 15/76 cm  
EEL=A-A++<sup>1)</sup>



**OVIS 100**

Floor stand, anthracite, E27 ESL, max. 24W, IP55 (excl.), IP55, suitable for outdoor use.

L/W/H 6/9.5/100 cm  
Base Ø: 14.7 cm  
EEL=A-A++<sup>1)</sup>



**CUBIX II**

Floor light, mobile aluminium light, 2xGU10 QPAR51, max. 2x25W (excl.). Includes 150 cm connection lead with mains plug, IP44, suitable for outdoor use. Light heads can be adjusted independently.

W/H/D: 18/14/11 cm  
EEL=E-A++<sup>1)</sup>

**Stainless steel** **227962**  
**TRUST 60 floor stand**

**silver-grey** **227874**  
**NEW POL garden light**

**anthracite** **228625**  
**OVIS 100 floor stand**

**silver-grey** **132842**  
**CUBIX II floor light**



**Recommended accessory**

Stainless steel grid for TRUST floor stands, stainless steel 304, Ø/H 8/10 cm, stainless steel 304

**Stainless steel** **227952**  
**Stainless steel grid**



**NAILS**

Outdoor floor stand, stainless steel 304, G9 QT14, max. 42W (excl.). 230V mains supply. IP44, suitable for outdoor use.

Ø/H 4.5/30.5 cm  
Base W/D: 9/9 cm  
EEL=D-A+<sup>1)</sup>

**Stainless steel** **229142**  
**NAILS FLOOR STAND**



**NAILS SPIKE LIGHT**

Stainless steel 304, G9 QT14, max. 42W (excl.). IP44, suitable for outdoor use. Incl. 150 cm connection lead with mains plug.

Ø/H 4.5/150 cm  
Base W/D: 9/9 cm  
EEL=D-A+<sup>1)</sup>

**Stainless steel** **229152**  
**NAILS SPIKE floor stand**



**Recommended accessory**

EXTENSION ROD for PLENUM FIX floor stands, white or anthracite, Ø/H: 3/46 cm

**white** **228958**  
**anthracite** **228959**

**Extension rod**



**PLENUM FIX**

Floor stand, round, white or anthracite, E27, max. 25W (excl.). IP44, suitable for outdoor use.

Ø/H: 22.5/100 cm  
Base Ø: 14.9 cm  
EEL=A-A++<sup>1)</sup>

**white** **228951**  
**anthracite** **228955**

**PLENUM FIX floor stand**



**PLENUM MOVE**

Floor stand, round, white, E27, max. 25W (excl.). IP44, suitable for outdoor use.

Ø/H: 22.5/186 cm  
Base Ø: 40 cm  
EEL=A-A++<sup>1)</sup>

**white** **228971**

**PLENUM MOVE floor stand**







**ROX PATH LIGHT GX53**

Floor stand, aluminium brushed, max. 9W (excl.). GX53 TCR-TSE socket, IP44, suitable for outdoor use.

H: 61.5 cm  
Tilt range: 180°  
EEL=B-A++ <sup>1)</sup>



**SITRA SL**

Floor stand, stainless steel brushed, GX53 TCR-TSE, max. 9W (excl.). IP44, suitable for outdoor use.

W/H: 21/79 cm  
Base Ø: 11 cm  
EEL=A-A++ <sup>1)</sup>



**CUBIC PATH LIGHT L-Type**

Floor stand, aluminium silver-grey, GU10 QPAR51, max. 35W (excl.). IP44, suitable for outdoor use. Lamps tiltable 180°.

W/H/D: 19/72/18 cm  
Base W/D: 18/18 cm  
EEL=E-A++ <sup>1)</sup>



**BERRA 30**

Floor stand, aluminium anthracite. SMD LED 4W 4000K, opalescent plastic surface. Connection box in the light shaft

Ø/H: 20/30 cm  
Ø Lamp head: 20 cm  
EEL=A-A++ <sup>2)</sup>

**aluminium brushed**      **229856**  
**ROX PATH LIGHT**

**Stainless steel**      **230071**  
**SITRA SL floor stand**

**silver-grey**      **232554**  
**CUBIC PATH LIGHT L-Type**

**anthracite**      **231283**  
**BERRA 30 floor stand**





**ROX ACRYL**

Wall light, up/down, round, aluminium brushed and opalescent acrylic, 2xE27 ESL max. 2x20W (excl.) with max. Ø/L: 6/17 cm. IP44, suitable for outdoor use.  
W/H/D: 16.5/36/16 cm  
EEL=A-A++<sup>1)</sup>

**aluminium brushed**      **230746**  
**ROX ACRYL wall light**



**GRAFIT TORCH**

Wall light, aluminium anthracite with frosted plastic in a grey smoked glass look, E27, max. 11W (excl.) with max. Ø/L: 6.8/12.2 cm. IP44, suitable for outdoor use.  
W/H/D: 8.5/53.5/8.5 cm  
EEL=A-A++<sup>1)</sup>

**anthracite**      **231195**  
**GRAFIT TORCH wall light**



**TRICONE**

Wall light, white or anthracite, QPAR51 max. 50W (excl.) with max. L: 7.6 cm IP44, suitable for outdoor use.  
W/H/D: 12/18/13.8 cm  
Canopy L/W: 9/6.5 cm  
EEL=E-A++<sup>1)</sup>

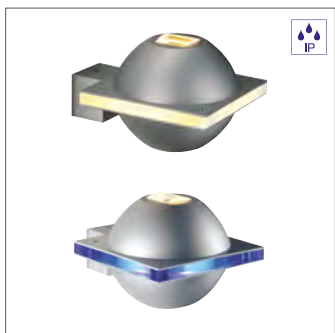
**white**      **231701**  
**anthracite**      **231705**  
**TRICONE wall light**



**KEIL**

Wall light, aluminium white or anthracite with glass, QT14, max. 42W (excl.). IP44, suitable for outdoor use.  
W/H/D: 12.4/18/14.8 cm  
EEL=A-A+<sup>1)</sup>

**white**      **231711**  
**anthracite**      **231715**  
**KEIL wall light**



**UFO BEAM**

Outdoor wall light, silver-grey/polycarbonate white or blue, QT14, max. 40W, (excl.). IP44, suitable for outdoor use.  
W/H/D: 10.5/13/16.4 cm  
EEL=D-A+<sup>1)</sup>

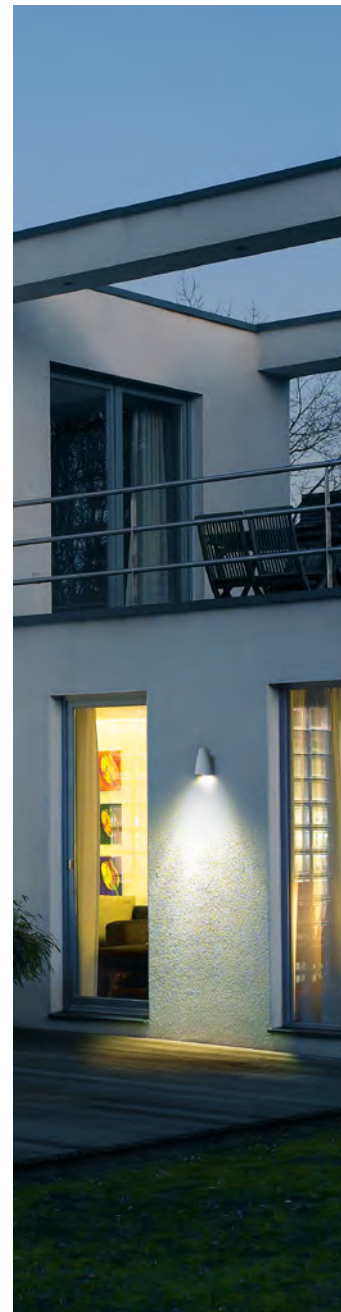
**silver-grey**      **151751**  
**blue/silver-grey**      **151757**  
**UFO BEAM wall light**



**NOVA WALL OUT**

Wall light, silver-grey, aluminium, R7s 78mm, max. 100W, (excl.). IP44, suitable for outdoor use.  
W/H/D: 18/9/9.5 cm  
EEL=D-C<sup>1)</sup>

**silver-grey**      **227032**  
**NOVA WALL OUT wall light**



**DACU BEAM**

Wall light, square, up/down, aluminium silver-grey, power LED warm white 3000K 2x1W, IP44, suitable for outdoor use. Incl. LED driver.  
W/H/D: 12.5/16/13 cm  
Beam angle: 8°  
EEL=A-A++<sup>2)</sup>

**silver-grey**      **227252**  
**DACU BEAM wall light**



**DACU**

Wall light, square, up/down, aluminium silver-grey, power LED warm white 3000K 2x1W, IP44, suitable for outdoor use. Incl. LED driver.  
W/H/D: 13/13/6.5 cm  
Beam angle: 120°  
EEL=A-A++<sup>2)</sup>

**silver-grey**      **227262**  
**DACU wall light**



**DACU**

Wall light, aluminium silver-grey with frosted glass, QT14, max. 40W, (excl.), up/down, IP44 suitable for outdoor use.  
W/H/D: 13/13/6.5 cm  
EEL=D-A+<sup>1)</sup>

**silver-grey**      **227132**  
**DACU wall light**



**TENDA**

Wall light, aluminium brushed, 2xpower LED, 6500K, 8.4W, white beam down, blue beam up, IP44 suitable for outdoor use. Incl. LED driver.  
W/H/D: 13.2/13.2/13.2 cm  
Rotation range: 4°  
EEL=A-A++<sup>2)</sup>

**aluminium brushed**      **229647**  
**TENDA wall light**



**OUT-BEAM G9**

Wall light, silver-grey, aluminium, QT14, max. 60W (excl.), up/down, IP44 suitable for outdoor use.

W/H/D: 8/8/15.3 cm  
EEL=D-A+<sup>1)</sup>

**silver-grey** 227064  
**OUT-BEAM G9 wall light**



**OUT-BEAM ROUND**

Wall light, round, silver-grey, aluminium, QT14, max. 40W (excl.), up/down, IP44 suitable for outdoor use.

Ø/T: 10.7/12.4 cm  
EEL=D-A+<sup>1)</sup>

**silver-grey** 227074  
**OUT-BEAM ROUND wall light**



**DELWA**

Wall light, aluminium white, power LED warm white 3000K 6.3W incl., IP44 suitable for outdoor use. Incl. LED driver.

W/H/D: 6/18/6 cm  
Beam angle: 90°  
EEL=A-A++<sup>2)</sup>

**silver-grey** 231912  
**DELWA wall light**



**MERIDIAN 3**

Recessed wall light, opalescent PC light surface. IP54 suitable for outdoor use. Aluminium/PC. E27 max 25W, max. Bulb length 17.5cm

W/H/D: 13.5/37.5/14 cm  
EEL=A-A++<sup>1)</sup>

**silver-grey** 230644  
**white** 230641  
**MERIDIAN 3 wall light**



**ROX WALL**

Wall light, round, aluminium brushed, GX53 max. 11W (excl.), IP44 suitable for outdoor use.

Ø/H: 13/14.5 cm  
EEL=B-A++<sup>1)</sup>

**Aluminium brushed** 229746  
**ROX wall light**



**KYKLOP WALL**

Wall light, semicircular, aluminium white or anthracite with frosted glass, power LED warm white 3000K max. 3x1W, IP44 suitable for outdoor use. Incl. LED driver.

W/H/D: 12.5/16/13 cm  
Cable diameter: 7-12 cm  
EEL=A-A++<sup>2)</sup>

**white** 231481  
**anthracite** 231485  
**KYKLOP WALL wall light**



**BIG THEO**

Wall light, square, aluminium white, GX53 max. 11W (excl.), IP44 suitable for outdoor use.

W/H/D: 13/10.2/13.5 cm  
EEL=B-A++<sup>1)</sup>

**white** 229991  
**BIG THEO Wall light**



**SQUARE TURN HIT-TC**

Wall light, square, aluminium silver-grey and frosted glass, GU6.5 HIT, 20W (excl.), IP44 suitable for outdoor use.

W/H/D: 12/12/17.5 cm  
Rotation range: 360°  
EEL=A-A+<sup>1)</sup>

**silver-grey** 230684  
**SQUARE TURN HIT-TC**

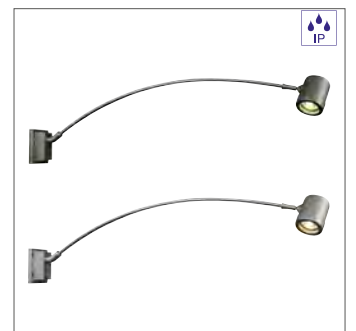
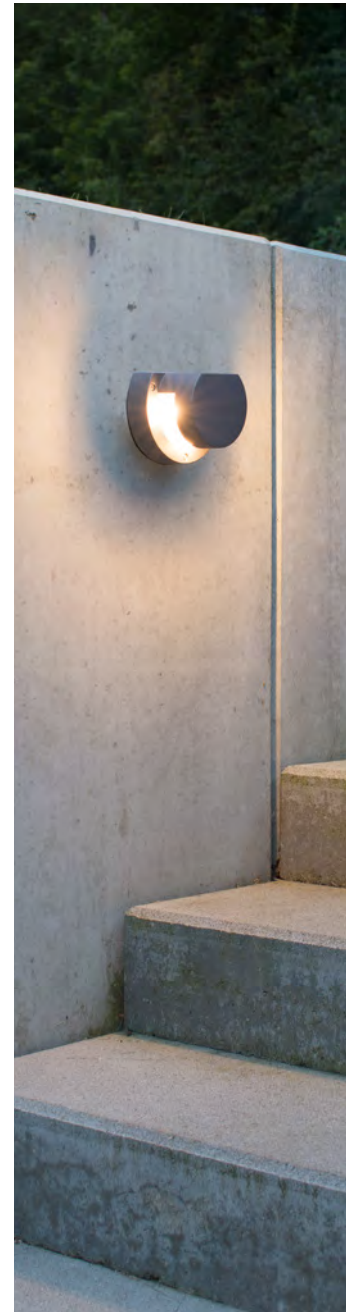


**ROX UP/DOWN**

Wall light, up/down, round, aluminium brushed and glass cover, 2xGX53 max. 18W (excl.), IP44 suitable for outdoor use.

W/H/D: 12.5/16/13 cm  
EEL=B-A++<sup>1)</sup>

**Aluminium brushed** 229786  
**ROX wall light**



**MYRA CURVED**

Display spot, aluminium, anthracite or silver, GU10 QPAR51, 50W max. (excl.), IP55 suitable for outdoor use.

W/H/D: 8/23/82 cm  
Head Ø/L: 18/25 cm  
Canopy W/H/D: 8/10.5/5 cm  
Tilt/Rotation range: 45°/350°  
EEL=E-A+<sup>1)</sup>

**anthracite** 228815  
**silver** 228812  
**MYRA CURVED display spot**



**BRICK**  
 Recessed wall light, stainless steel 304, SMD LED, 6500K or 3000K, 1,6W, IP54 suitable for outdoor use. Incl. LED driver and mounting pot.  
 W/H/D: 16.5/10.5/7.5 cm  
 Installation W/D: 16/9 cm  
 EEI=A-A++ <sup>2)</sup>

**Stainless steel LED 6500K 229121**  
**Stainless steel LED 3000K 229122**  
**BRICK wall light**



**BRICK LED DOWNUNDER**  
 Recessed wall light, aluminium, silver-grey, SMD LED, 3000K, 1.2W, IP54 suitable for outdoor use. Incl. LED driver and mounting pot.  
 W/H/D: 10.5/17/8.5 cm  
 Installation W/D: 10/10 cm  
 EEI=A-A++ <sup>2)</sup>

**silver-grey 229722**  
**BRICK LED DOWNUNDER**



**QUADRASYL WITH BRACKET**  
 Outdoor light, square, silver-grey, stainless steel 316, GX53 max. 9W, IP44 suitable for outdoor use.  
 W/H/D: 13.5/13.5/11 cm  
 Tilt range: 350°  
 EEI=B-A++ <sup>1)</sup>

**silver-grey 111522**  
**QUADRASYL**



**QUADRASYL D**  
 Outdoor light, square, silver-grey, stainless steel 316, downlight, GX53 max. 9W (excl.) with max. Ø/L 7.5/2,1 cm, IP23 (when mounted on ceiling) suitable for outdoor use.  
 W/H/D: 10.4/10.4/2.9 cm  
 EEI=B-A++ <sup>1)</sup>

**silver-grey 111131**  
**QUADRASYL D**



**EASYLITE DISPLAY**  
 Display light, aluminium grey, HQI-T / CDM-T 70W (excl.), IP44 suitable for outdoor use, incl. electronic ballast.  
 H: 97 cm  
 Head Ø/L: 18/25 cm  
 Base Ø/L: 19/11.5 cm  
 Tilt range: 160°  
 EEI=A-A+ <sup>1)</sup>

**grey 230605**  
**EASYLITE SPIKE display light**



**RGB FLOOD**  
 Façade spot, silver-grey, aluminium, 3in1 surfaces LED RGB for LIM, 37W, IP65 also suitable for outdoor use, mounted on wall, ceiling or floor with mounting bracket, incl. connection lead, 2m control cable, PMW converter.  
 W/H/D: 22.5/20/13 cm  
 Tilt range: 90°  
 Beam angle: 100°  
 EEI=A-A++ <sup>2)</sup>

**silver-grey 231113**  
**RGB FLOOD**



**KETO ROUND**  
 Façade light, round, black, aluminium, 5 red, green, blue power LEDs, 15W max. incl., mounted on wall, ceiling or floor with mounting bracket. IP65 also suitable for outdoor use.  
 W/H/D: 17/18/6 cm  
 Tilt range: 360°  
 EEI=A-A++ <sup>2)</sup>

**black 229453**  
**KETO ROUND**







**ADJUST QUADRO**

Inground fitting, stainless steel 304 and partially frosted glass, GU10 QPAR51 max. 35W (excl.), IP67 suitable for outdoor use, incl. mounting pot.

L/W/H: 13/13/12 cm  
 Installation L/W/D: 12.5/12.5/12 cm  
 Glass insert L/W: 7/7 cm  
 Connection lead Ø: 5-10 mm  
 EEI=E-A++ <sup>1)</sup>

**Stainless steel 228218**

**ADJUST QUADRO**



**DASAR 115**

Inground fitting, stainless steel 316 and partially frosted glass, rigid, QR-CBC51 max. 35W (excl.), IP67 suitable for outdoor use, incl. mounting pot.

Installation Ø/D/H: 10.1//14.5/13 cm  
 Connection lead Ø: 12 mm  
 Load: 2 T  
 EEI=C-A+ <sup>1)</sup>

**Stainless steel, square 229344**

**Stainless steel, round 229340**

**DASAR 115**



**DASAR MODULE**

Inground fitting, stainless steel and clear glass, square, Philips LED Twistable Module 20W (excl.), IP67 suitable for outdoor use, incl. mounting pot.

L/W/D: 21.6/21.6/16 cm  
 Installation Ø/D: 20/18 cm  
 Load: 2 T  
 EEI=A-A+ <sup>1)</sup>

**Stainless steel, square 230164**

**DASAR MODULE**

**Stainless steel, round 230160**

**DASAR MODULE**



**DASAR EXACT**

Inground fitting, stainless steel 316 brushed, square, QR-CBC51 max. 35W (excl.), IP67 suitable for outdoor use, incl. mounting pot.

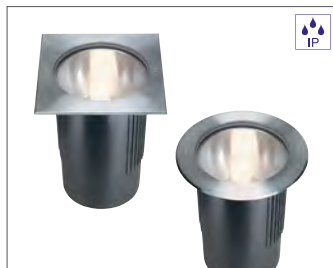
L/W/D: 11.6/11.6/16.5 cm  
 Installation L/W/D: 11.6/11.6/17 cm  
 Load: 2 T  
 Tilt/Rotation range: 30°/90°  
 EEI=C-A+ <sup>1)</sup>

**Stainless steel, round 228420**

**DASAR EXACT**

**Stainless steel, square 228424**

**DASAR EXACT**



**DASAR 260 UNI**

Inground fitting, stainless steel 316 and clear glass, E27 ESL, max. 24W (excl.) with max. Ø/L: 5.2/17.3 cm, IP67 for outdoor use, incl. mounting pot.

Ø/D: 27/31.5 cm  
 Installation Ø/D: 24.4/40 cm  
 Connection lead Ø: 11 mm  
 Load: 2 t  
 EEI=A-A++ <sup>1)</sup>

**Stainless steel, square 229214**

**Stainless steel, round 229210**

**DASAR 260 UNI**



**WETSY POWER**

Inground fitting, stainless steel 316, power LED, 5W, IP67 suitable for outdoor use, incl. mounting pot and 140 cm connection lead.

L/W: 13.2/13.2 cm  
 Installation Ø/D: 12.6/10 cm  
 Mechanical loading: 1 t  
 EEI=A-A++ <sup>2)</sup>

**Stainless steel 5700K square 227421**

**Stainless steel 3000K square 227422**

**Stainless steel 3000K round 227432**

**WETSY POWER**



**DASAR**

Inground fitting, stainless steel 316, frosted glass, round, GX52 TCR-TSE max. 9W (excl.), IP67 suitable for outdoor use, incl. mounting pot.

Ø/H: 8,3/8 cm  
 Installation Ø/D: 12.5/8 cm  
 Load: 2 t  
 EEI=B-A+ <sup>1)</sup>

**Stainless steel 229360**

**DASAR**



**DASAR FLAT**

Inground fitting, stainless steel 304 brushed, round, SMD LED, 6500K or 3000K, 4.8W, IP67 suitable for outdoor use, incl. mounting pot and 2 m connection lead.

L/W/D: 13.5/13.5/11.5 cm  
 Installation Ø/D: 12.3/11.5 cm  
 EEI=A-A++ <sup>2)</sup>

**Stainless steel 6500K 228401**

**Stainless steel 3000K 228402**

**DASAR FLAT**



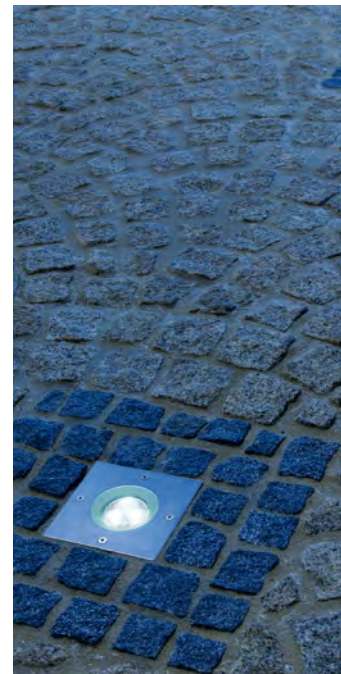
**N-TIC**

Inground fitting, stainless steel 316 brushed, partially frosted glass, square, GU5.3 QR-C51 max. 35W (excl.), IP67 suitable for outdoor use, incl. mounting pot.

L/W/D: 13.5/13.5/11.5 cm  
 Installation Ø/D: 12.3/11.5 cm  
 Load: 500 kg  
 Tilt/Rotation range: 30°/90°  
 EEI=C-A+ <sup>1)</sup>

**Stainless steel 230904**

**N-TIC**







**FLEXLED ROLL RGB**

Flexible LED RGB strip, 12V DC, 3m with 36 LED/m, 21W max., adhesive strip on the back for easy mounting. Can be separated every 8.3 cm, for lengths over 300 cm a new feed-in must be made.

L/W/H: 300/1/0.22 cm  
LED distance: 2.77 m  
EEL=A+



**FLEXLED ROLL RGB**

Flexible LED RGB strip, 12V DC, 5m with 36 LED/m, 35W max., adhesive strip on the back for easy mounting. Can be separated every 8.3 cm. For lengths over 300 cm a new feed-in must be made.

L/W/H: 500/1/0.22 cm  
LED distance: 2.77 m  
EEL=A+



**FLEXLED ROLL**

Flexible LED strip, 12V DC, 1m with 60 LED/m, 4W max., adhesive strip on the back for easy mounting. Can be separated every 5 cm. For lengths over 500 cm a new feed-in must be made.

L/W/H: 100/0.8/0.24 cm  
LED distance: 1.65 m  
EEL=A+



**FLEXLED ROLL PRO**

High-performance, flexible LED strip, 12V DC, 1m with 60 LED/m, 10W max., adhesive strip on the back for easy mounting. For lengths over 300 cm a new feed-in must be made, can be separated every 5 cm.

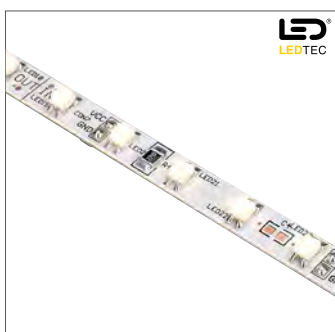
L/W/H: 100/1/0.22 cm  
LED distance: 1.7 m  
EEL=A+

**RGB** **552013**  
**FLEXLED ROLL RGB**

**LED RGB** **552023**  
**FLEXLED ROLL**

**LED warm white 3000K** **552002**  
**FLEXLED ROLL**

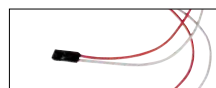
**LED warm white 3000K** **552062**  
**FLEXLED ROLL PRO**



**LED STRIPS 24V**

Rigid LED RGB Strip, 24V, with 78 LED, 2W per strip. Can be separated every 7.6 cm. For outputs >50W a new feed-in must be made. Fastening clip 550191 optional.

L/W/H: 30.5/0.7/0.7 cm  
LED distance: 1.3 m  
EEL=A++



**Recommended accessory**

Feed-in cable for strip 24V=50W max. Length: 50 cm  
**550192 / 2 pce.**



**Recommended accessory**

Fastening clips with cable binder,  
**550191 / 100 pce.**



**Recommended accessory**

Direct connector for strip 24V=50W max.  
**550193 / 10 pce.**



**FLEXLED ROLL PRO**

High-performance, flexible LED strip, 12V DC, 3m with 60 LED/m, 30W max., adhesive strip on the back for easy mounting. For lengths over 300 cm a new feed-in must be made, can be separated every 5 cm.

L/W/H: 300/1/0.22 cm  
LED distance: 1.7 m  
EEL=A+

**LED warm white 3000K** **550182**  
**LED STRIPS 24V**

LED STRIPS - power connection via feed-in cable (550192), connection via the flexible connector (550190) or optionally via direct connector (550193).

**LED warm white 3000K** **552072**  
**FLEXLED ROLL PRO**

**FLEXLED ROLL**

Flexible LED strip, 24V DC, 3m with 60 LED/m, 14W max., adhesive strip on the back for easy mounting. For lengths over 500 cm a new feed-in must be made.

L/W/H: 300/1/0.15 cm  
LED distance: 2.1 m  
EEL=A+

**LED white 2700K** 552110  
**LED warm white 3000K** 552112  
**LED blue** 552117

**FLEXLED ROLL**

**FLEXLED ROLL**

Flexible LED strip, 24V, 1m with 60 LED/m, 5W max., adhesive strip on the back for easy mounting. For lengths over 500 cm a new feed-in must be made.

L/W/H: 100/1/0.15 cm  
LED distance: 1.7 m  
EEL=A+

**LED white 2700K** 552100  
**LED white 5000K** 552101  
**LED warm white 3000K** 552102  
**LED blue** 552107

**FLEXLED ROLL**

**FLEXLED ROLL RGB**

Flexible LED RGB strip, 24V DC, 1m with 48 RGB LED/m, 12W max., adhesive strip on the back for easy mounting. For lengths over 500 cm a new feed-in must be made. Can be separated every 12.5 cm

L/W/H: 100/1.5/0.2 cm  
LED distance: 2.1 m  
EEL=A+

**LED RGB** 552103

**FLEXLED ROLL RGB**

**FLEXLED ROLL RGB**

Flexible LED RGB strip, 24V DC, 3m with 48 RGB LED/m, 30W max., adhesive strip on the back for easy mounting. For lengths over 500 cm a new feed-in must be made. Can be separated every 12.5 cm.

L/W/H: 300/1.5/0.2 cm  
LED distance: 2.1 m  
EEL=A+

**LED RGB** 552113

**FLEXLED ROLL RGB**

**FLEXLED ROLL**

Flexible LED strip, 24V DC, 5m with 60 LED/m, 20W max., adhesive strip on the back for easy mounting. For lengths over 500 cm a new feed-in must be made, can be separated every 10 cm.

L/W/H: 500/1/0.3 cm  
LED distance: 1.7 m  
EEL=A+

**LED blue** 552127

**FLEXLED ROLL**

**IP FLEXLED ROLL**

Plastic wrapped, flexible 12V DC LED strip from the Outdoor series, 3m with 60 LED/m, 12W max., adhesive band on the back for easy mounting. For lengths over 500 cm a new feed-in must be made. Cannot be extended, IP55 suitable for outdoor use.

L/W/H: 300/1/0.5 cm  
LED distance: 1.65 m  
EEL=A+

**LED white 2700K** 552211

**LED warm white 3000K** 552212

**IP FLEXLED ROLL**

**IP FLEXLED ROLL**

Plastic wrapped, flexible 12V DC LED strip from the Outdoor series, 5m with 60 LED/m, 20W max., adhesive strip on the back for easy mounting. For lengths over 500 cm a new feed-in must be made. Cannot be extended, can be separated every 8.3 cm. IP55 suitable for outdoor use.

L/W/H: 500/1/0.5 cm  
LED distance: 1.65 m  
EEL=A+

**LED warm white 3000K** 552222

**IP FLEXLED ROLL**

**IP FLEXLED ROLL RGB**

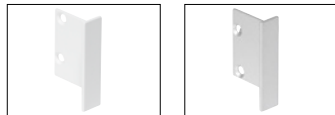
Plastic wrapped, flexible 12V DC LED strip from the Outdoor series, 5m with 36 RGB LED/m, 35W max., adhesive strip on the back for easy mounting. For lengths over 500 cm a new feed-in must be made. Cannot be extended, can be separated every 8.3 cm. IP55 suitable for outdoor use.

L/W/H: 500/1.2/0.5 cm  
LED distance: 2.77 m  
EEL=A+

**LED RGB** 552223

**IP FLEXLED ROLL RGB**





**RECOMMENDED ACCESSORY**  
End caps for GLENOS recessed wall profile.  
**213411 / white 2 pce.**  
**213414 / silver-grey 2 pce.**



**RECOMMENDED ACCESSORY**  
Installation spring set for GLENOS recessed wall profile.  
**213421 / chrome 5 pce.**



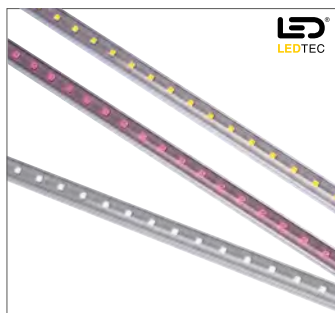
**RECOMMENDED ACCESSORY**  
Longitudinal connector for GLENOS recessed wall profile, W/H/D: 6/0.15/0.75 cm.  
**213422 / chrome**

**GLENOS**

Recessed wall profile, aluminium, for insertion of LED strips, asymmetrical 4026, white, 2m.

Installation L/W/H: 200/3.1/2.5 cm  
L/W/H: 200/4/2.6 m  
For LED strips max.: 1.8 cm

**matt white** **213401**  
**GLENOS**



**Recommended accessory**  
Feed-in cable for Delf C RGB.  
Length: 1.5 m  
**Feed-in cable 631424**

**Delf C 500/1000 RGB LED**

Light bar 24V, 24 or 48 3in1 RGB LED, 4.8W or 9.6W per light bar. Can be directly connected via push-in contacts. Power supply and controller (excl.). For outputs >50W a new feed-in must be made.

500 L/W/H: 51/2/1.5 cm  
1000 L/W/H: 100/2/1.5 cm

**anodised aluminium, LED RGB 631403**  
**DELFC 500 RGB**



**Recommended accessory**  
Flexible connector for Delf C RGB.  
Length: 12 cm  
**Flexible connector 631425**

**anodised aluminium, LED RGB 631413**  
**DELFC 1000 RGB**



**GALEN RGB LED PROFILE**

Outdoor façade light, anodised aluminium, 15W, 350mA, IP65. Aluminium profile equipped with 15 high-performance red, green and blue power LEDs, incl. connection lead and mounting bracket.

L/W/H: 52/5.3/8 cm  
Tilt range: 180°  
EEL=A-A++<sup>2)</sup>

**aluminium 229463**  
**GALEN RGB LED PROFILE**



**GALEN LED PROFILE**

Outdoor façade light, anodised aluminium, 15W, 350mA, IP65. Aluminium profile equipped with 15 high-performance white power LEDs, incl. connection lead and mounting bracket.

L/W/H: 52/5.3/8 cm  
Tilt range: 180°  
EEL=A-A++<sup>2)</sup>

**aluminium 6500K 229461**  
**GALEN LED PROFILE**



**LED STRIPS Outdoor 100 pro**

Rigid LED consisting of cast resin SMD LEDs in an aluminium profile. 24V, 5700K, 8.4W. Includes two 10 cm connection leads with plug and coupler. IP55 for outdoor use.

L/W/H: 100.5/2/1.5 cm  
EEL=A-A++<sup>2)</sup>

**LED 5700K, anodised aluminium 552301**  
**LED STRIPS OUTDOOR 100 PRO**



**GALEN LED PROFILE**

Outdoor façade light, anodised aluminium, 15W, 350mA, IP65. Aluminium profile equipped with 15 high-performance warm white power LEDs, incl. connection lead and mounting bracket.

L/W/H: 52/5.3/8 cm  
Tilt range: 180°  
EEL=A-A++<sup>2)</sup>

**aluminium 3000K 229462**  
**GALEN LED PROFILE**



**PADI LED 600**

Light bar in high-quality aluminium profile, anodised aluminium, 24V DC 4W, incl. mounting clips.

L/W/H: 60.6/1.6/0.8 cm  
Connection lead 150 cm  
EEL=A-A++<sup>2)</sup>

**warm white 3000K 111732**  
**PADI LED 600**




**CMH MR16 PRECISE™ CONSTANTCOLOR™ GX10 HIPAR51**

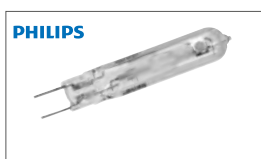
Article no.	Socket	Watts	Ø in cm	Length in cm	Colour temperature	Luminous intensity	Luminous flux	Colour rendering	Beam angle	EEl	Life span
507220	GX10	20W	5.1	5.45	3000K	2900cd	1000lm	CRI>80	25°	EEl=A	12000 h
507321	GX10	35W	5.1	5.45	4000K	5500cd	2200lm	CRI 92	25°	EEl=A	12000 h


**GU10 Quartz halogen**

Article no.	Socket	Watts	Ø in cm	Colour temperature	Luminous intensity	Luminous flux	Colour rendering	Beam angle	EEl
575530	GU10	50W	5.0	2700K	1100cd	332lm	CRI 100	25°	EEl=D
575535	GU10	50W	5.0	2700K	500cd	332lm	CRI 100	50°	EEl=D


**Pin socket low pressure lamp G4**

Article no.	Socket	Watts	Colour temperature	Luminous flux	Colour rendering	EEl
512205	G4	5W	2700K	50lm	CRI 100	EEl=C


**CDM-TC ELITE G8.5 HIT Halogen metal halide**

Article no.	Socket	Watts	Ø in cm	Length in cm	Colour temperature	Luminous flux	Colour rendering	EEl
507410	G8.5	70W	1.5	8.5	3000K	7650lm	CRI 90	EEl=A+


**CDM-T ELITE G12 HIT Halogen metal halide**

Article no.	Socket	Watts	Length in cm	Width in cm	Colour temperature	Luminous flux	Colour rendering	EEl	Life span
507420	G12	35W	10.3	2.0	3000K	3700lm	CRI 90	EEl=A+	15000 h
507450	G12	50W	10.3	2.0	3000K	5400lm	CRI 90	EEl=A+	15000 h
507440	G12	150W	11.0	2.0	3000K	15000lm	CRI 92	EEl=A+	12000 h


**Rx7s CDM-TD HIT-DE Halogen metal halide**

Article no.	Socket	Watts	Length in cm	Colour temperature	Luminous flux	Colour rendering	EEl
507150	Rx7s	150W	13.5	3000K	13250lm	CRI 88	EEl=A
507151	Rx7s	150W	13.5	4200K	14200lm	CRI 96	EEl=A


**CDM-T EVOLUTION G12 HIT Halogen metal halide**

Article no.	Socket	Watts	Length in cm	Width in cm	Colour temperature	Luminous flux	Colour rendering	EEl
507490	G12	35W	10.3	2.0	3000K	4300lm	CRI 90	EEl=A+
507500	G12	70W	10.3	2.0	3000K	8700lm	CRI 90	EEl=A+


**TC-S G23 TC-S 2-pin energy saving lamp**

Article no.	Socket	Watts	Ø in cm	Length in cm	Colour temperature	Luminous flux	Colour rendering	EEl	Weight in kg
508209	G23	9W	2.8	16.7	2700K	600lm	CRI 82	EEl=A	0.03


**TC-D G24d-3 TC-D 2-pin energy saving lamp**

Article no.	Socket	Watts	Ø in cm	Length in cm	Colour temperature	Luminous flux	Colour rendering	EEl	Life span	Weight in kg
508226	G24d-3	26W	4.1	17.1	2700K	1800lm	CRI 83	EEl=B	10000 h	0.06

PHILIPS

**ELD E27 ELD 2-way energy saving lamp**

Article no.	Socket	Watts	Ø in cm	Length in cm	Colour temperature	Luminous flux	Colour rendering	EEI
508415	E27	15W	4.6	14.8	2700K	800lm	CRI>80	EEI=A

**ELT E27 ELT 3-way energy saving lamp**

Article no.	Socket	Watts	Ø in cm	Length in cm	Colour temperature	Luminous flux	Colour rendering	EEI	Weight in kg
508416	E27	20W	4.5	14.6	2700K	1185lm	CRI 82	EEI=A	0.07

**SHOPLIGHT GX53 ES111 energy saving lamp**

Article no.	Socket	Watts	Ø in cm	Length in cm	Colour temperature	Luminous flux	Luminous intensity	EEI
508551	GX53	15W	11.1	8	4000 K	290lm	400 cd	EEI=A

PHILIPS

**MASTER STAIRWAY ELT E27 ELT 3-way energy saving lamp**

Article no.	Socket	Watts	Ø in cm	Length in cm	Colour temperature	Luminous flux	Consumption	Colour rendering	EEI	Weight in kg
508600	E27	15W	4.8	12.6	2700K	800lm	120mA	CRI 82	EEI=A	0.08

**MINILYNX E14 energy saving lamp**

Article no.	Socket	Watts	Ø in cm	Length in cm	Colour temperature	Luminous flux	Colour rendering	EEI
508630	E14	11W	4.8	10.0	2700K	600lm	CRI 82	EEI=A
508631	E14	11W	4.8	10.2	4000K	600lm	CRI 80	EEI=A

**MINILYNX E27 energy saving lamp**

Article no.	Socket	Watts	Ø in cm	Length in cm	Colour temperature	Luminous flux	Colour rendering	EEI	Weight in kg
508730	E27	11W	4.8	10.0	2700K	600lm	CRI 80	EEI=A	0.06
508731	E27	11W	4.8	10.2	4000K	600lm	CRI 80	EEI=A	0.06

**E14 energy saving lamp**

Article no.	Socket	Watts	Ø in cm	Length in cm	Colour temperature	Luminous flux	Colour rendering	EEI
508840	E14	9W	3.8	11.7	2700K	420lm	CRI 80	EEI=A

**E27 energy saving lamp, 12W, spiral shape**

Article no.	Socket	Watts	Ø in cm	Length in cm	Colour temperature	Luminous flux	Colour rendering	EEI	Weight in kg
509002	E27	12W	4.75	9.4	2700K	741lm	CRI 82	EEI=A	0.06

PHILIPS

**TC-DE G24q-1 / TC-DE G24q-3 TC-DE 4-pin energy saving lamp**

Article no.	Socket	Watts	Ø in cm	Length in cm	Colour temperature	Luminous flux	Colour rendering	EEI	Weight in kg
508312	G24q-1	13W	4.1	13.1	4000K	900lm	CRI 82	EEI=A	0.05
508322	G24q-3	26W	4.1	16.4	4000K	1760lm	CRI 82	EEI=A	0.06

**TC-L 2G11 TC-L 2G11 4-pin energy saving lamp**

Article no.	Socket	Watts	Length/Width/Height	Colour temperature	Luminous flux	Colour rendering	EEI	Weight in kg
508460	2G11	18W	22.7/3.9/2.4	2700K	1200lm	CRI 82	EEI=A	0.07
508461	2G11	18W	22.7/3.9/2.4	4000K	1200lm	CRI 82	EEI=A	0.07



#### LED ES111, type power LED

Article no.	Socket	Watts	Ø in cm	Length in cm	Colour temperature	Luminous intensity	Luminous flux	Colour rendering	Beam angle	EEL
550342	GU10	9.6W	11.0	6.9	3000K	4250cd	650lm	CRI 82	20°	EEL=A+



#### GU10 LED, type COB LED

Article no.	Socket	Watts	Ø in cm	Length in cm	Colour temperature	Luminous intensity	Luminous flux	Colour rendering	Beam angle	EEL
551322	GU10	5.6W	5.0	5.7	3000K	820cd	330lm	CRI 80	30°	EEL=A+



#### R7s, type SMD LED

Article no.	Socket	Watts	Length/Width/Height	Colour temperature	Luminous flux	Colour rendering	EEL
551500	R7s 118mm	8.5W	11.8 4.8 3.0	4000K	700lm	CRI 83	EEL=A+
551502	R7s 118mm	8.5W	11.8 4.8 3.0	3000K	700lm	CRI 83	EEL=A+



#### LED GU10, 5W, Type SMD LED

Article no.	Socket	Watts	Ø in cm	Colour temperature	Luminous intensity	Luminous flux	Colour rendering	EEL
570054	GU10	5W	5.0	4000K	745cd	380lm	CRI 80	EEL=A+



#### LED GU10 Sylvania, 5.5W, lamp, 40°, dimmable

Article no.	Socket	Watts	Ø in cm	Colour temperature	Luminous intensity	Luminous flux	Colour rendering	EEL
570062	GU10	5.5 W	5	2700 K	670 cd	360 lm	CRI 80	A+



#### MASTER LED PAR30 E27, dimmable

Article no.	Socket	Watts	Ø in cm	Colour temperature	Luminous intensity	Luminous flux	Colour rendering	Beam angle	EEL
560212	E27	9.5W	9.2	2700 K	3500 cd	650 lm	CRI 80	25 degrees	EEL=A+



**E27 10W, type SMD LED**

Article no.	Socket	Watts	Ø in cm	Length in cm	Colour temperature	Luminous intensity	Luminous flux	Colour rendering	EEI
551342	E27	10W	6.8	12.2	3000K	3500 cd	700lm	CRI 82	EEI=A

**E27 LED CANDLE SHAPE, type SMD LED**

Article no.	Socket	Watts	Ø in cm	Length in cm	Colour temperature	Luminous flux	Colour rendering	EEI
551522	E27	6W	3.8	10.8	2700K	475lm	CRI 81	EEI=A+

**PHILIPS MASTER LED E27, Type SMD LED, dimmable**

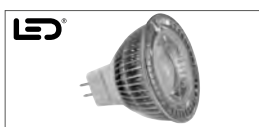
Article no.	Socket	Watts	Ø in cm	Length in cm	Colour temperature	Luminous flux	Colour rendering	EEI
560150	E27	13W	6.1	12.7	2700K	1055lm	CRI 80	EEI=A+

**LED QRB111, type power LED**

Article no.	Socket	Watts	Ø in cm	Length in cm	Colour temperature	Luminous intensity	Luminous flux	Colour rendering	EEI
550132	G53	9W	11.1	5.8	3000K	1270cd	670lm	CRI 82	EEI=A+

**PHILIPS LED QRB111, type power LED**

Article no.	Socket	Watts	Ø in cm	Length in cm	Colour temperature	Luminous intensity	Luminous flux	Colour rendering	EEI
560034	G53	10W	11.1	5.6	3000K	1270cd	620lm	CRI 80	EEI=A

**MR16 LED, type COB LED**

Article no.	Socket	Watts	Ø in cm	Length in cm	Colour temperature	Luminous intensity	Luminous flux	Colour rendering	EEI
551301	GU5.3	4.2W	5.0	4.9	5700K	680cd	285lm	CRI 80	EEI=A+
551302	GU5.3	4.2W	5.0	4.9	3000K	680cd	285lm	CRI 80	EEI=A+
551311	GU5.3	4.2W	5.0	4.9	5700K	310cd	285lm	CRI 80	EEI=A+

**LED G9, type SMD LED**

Article no.	Socket	Watts	Colour temperature	Beam angle	Luminous flux	Colour rendering	EEI
570023	G9	2 Watt	3000 K	180 degrees	140 lm	CRI 80	A+

**LED G9, type SMD LED**

Article no.	Socket	Watts	Ø in cm	Colour temperature	Beam angle	Luminous flux	Colour rendering	EEI
570022	G9	2.5 Watt	1.8	2700 K	180 degrees	170 lm	CRI 80	A+

**RING TUBE T5 / T8 energy saving lamp**

Article no.	Socket	Watts	Ø in cm	Colour temperature	Luminous flux	Colour rendering	Life span	EEI
548221	2GX13	22W	22.5	4000K	1800lm	CRI 82	10000 h	EEI=A
548231	G10q	32W	30.0	4000K	2375lm	CRI 85	9000 h	EEI=A
548210	G10q	40W	40.6	3000K	3200lm	CRI 85	9000 h	EEI=A
548211	G10q	40W	40.6	4000K	3200lm	CRI 85	9000 h	EEI=A

**T8 energy saving lamp**

Article no.	Socket	Watts	Ø in cm	Length in cm	Colour temperature	Luminous flux	Colour rendering	Life span	EEI
548202	G13	18W	2.6	59.0	3000K	1350lm	CRI 85	20000 h	EEI=A

**LED DRIVER/ LED POWER SUPPLY**

Article no.	Description	Watts	Number of LEDs	Specification	Power factor	Length/ Width / Height in cm
464112	LED DRIVER 11W, dimmable, 350mA	1-11W	9 LED 1W	ta: 50°C/tc:75°C	0.4 λ	20.0 / 4.3 / 3.9
464110	LED DRIVER 12W, dimmable, 350mA	6-12W	5-9 LED 1W	ta: 50°C/tc:70°C	0.95 λ	16.7 / 3.9 / 3.0
464202	LED DRIVER 12W, 700mA	6-12W	2-4 LED 3W	ta: 50°C/tc:70°C	0.95 λ	16.7 / 3.9 / 3.0
464111	LED DRIVER 18W, 350mA	10-18W	9-15 LED 1W	ta: 50°C/tc:70°C	0.95 λ	15.3 / 6.7 / 3.5
464201	LED DRIVER 18W, 700mA	10-18W	4-6 LED 3W	ta: 50°C/tc:70°C	0.95 λ	15.3 / 6.7 / 3.5
464120	LED DRIVER 8W, 480mA	1-8W	1 LED	ta: 50°C/tc:70°C	0.55 λ	8.5 / 4.04 / 2.2
464163	LED DRIVER 40W, 700mA	20 - 40W	7 - 13 LED	ta: 50°C/tc:85°C	0.9 λ	16.7 / 4.6 / 3
470539	LED POWER SUPPLY 60W, 12V~, dimmable	Secondary voltage in DC: 12V; Output power per channel: 3x20W		ta: 50°C/tc: 75°C		18.5 / 13.0 / 3.5

**PERFECT DIMMING SYSTEM electronic ballast**

Article no.	Description	Output power	Output current	Specification	Power factor	Length/Width/Depth in cm
464400	Perfect Dimming – Inverter		1.5A	ta: 50°C/tc: 80°C		4.5 / 2.8 / 1.3
464401	Perfect Dimming, driver 350mA, 18W	18W	350mA	ta: 50°C/tc: 80°C	0.9 λ	16.7 / 3.9 / 3.0
464402	Perfect Dimming, driver 500mA, 18W	18W	500mA	ta: 50°C/tc: 80°C	0.9 λ	16.7 / 3.9 / 3.0
464403	Perfect Dimming, driver 700mA, 18W	18W	700mA	ta: 50°C/tc: 80°C	0.9 λ	16.7 / 3.9 / 3.0

**Electronic ballast HID, 35W**

Article no.	Description	Voltage in AC/AC	Watts	Specification	Length/Width/Depth in cm	Power factor	Ignition voltage
470361	Electronic ballast 35W	230V	35W	ta: 50°C/tc: 70°C	20.0 4.3 3.9	0.98 λ	< 5 kv

**OSRAM MOUSE**

Article no.	Description	Voltage in AC/AC	Watts	Specification	Length/Width/Depth in cm
461075	Osram Mouse 70	230V /12V	20-70VA	tc: 80°C/ta: 50°C	10.8 / 5.2 / 3.3
461105	Osram Mouse 105	230V /12V	35-105VA	tc: 85°C/ta: 50°C	10.8 / 5.2 / 3.3
461155	Osram Mouse 150	230V /12V	50-150VA	tc: 80°C/ta: 50°C	15.3 / 5.4 / 3.6

**ELECTRONIC TRANSFORMER**

Article no.	Description	Voltage in AC/AC	Watts	Specification	Length/Width/Depth in cm
461067	ELECTRONIC TRANSFORMER 01 60VA	230V /12V	10-60VA	tc: 70°C/ta: 50°C	15.1 / 3.6 / 2.7
461107	ELECTRONIC TRANSFORMER 02 105VA	230V /12V	20-105VA	tc: 80°C/ta: 50°C	16.6 / 3.9 / 3.3

**ROUND TRANSFORMER 35VA/12V~**

Article no.	Description	Voltage in AC/AC	Watts	Specification	Ø / Height in cm
451022	Round transformer 35VA	230V /12V	35VA	ta: 40°C	5.7 / 8.0

**COROIDAL TRANSFORMER MANTA 200, 300**

Article no.	Description	Colour	Voltage in AC/AC	Watts	Secondary fuse-protected	Ø in cm	Height in cm	Weight in kg
455202	Manta 200	chrome	230V /12V	200VA	1x 20A	20.0	8.0	2.75
455209	Manta 200	silver-grey	230V /12V	200VA	1x 20A	20.0	8.0	2.75
455302	Manta 300	chrome	230V /12V	300VA	2x 15A	20.0	9.0	3.8

**LIM®2 CONTROLLER**

Four groups of lights with digital operating device for a control voltage of 1–10 volt. 230V

**natural aluminium** 470531

**LIM®2 CONTROLLER**

**REMOTE CONTROL LIM®2**

for LIM®2 controller, 2x AA 1.,5V batteries (excl.),

**Remote control** 470530

**Remote control**

**ARTE 300**

Toroidal core transformer, voltage AC/AC 230V/12V, output 300VA

Ø/H: 16.0/9.5 cm

**chrome** 167032

**silver-grey** 167039

**ARTE 300**

**MICROWAVE MOTION SENSOR**

Output 0.5W; Detection angle 180°/180°; Distance m: 2/5/8/10; IP44

Ø/H: 11.5/5.8 cm

**white** 410871

**MOTION SENSOR**

**Information on energy labelling according to EU Regulation 874/2012**

<sup>1)</sup> This luminaire is compatible with lamps of the energy efficiency indexes...

<sup>2)</sup> This luminaire includes built-in LED lamps. The lamps in the luminaire cannot be replaced.







# THE NEW CATALOGUE

## MORE WHITE 2017

From May 2017

