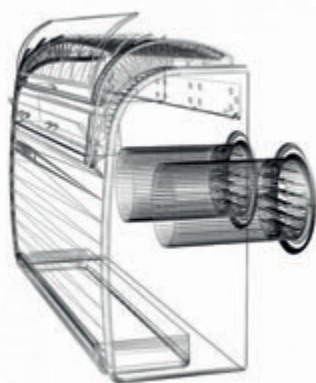


demagro

ELECTRO

DIGITEMP MONOBLOC ZONDER BUITENUNIT.

DIGITEMP MONOBLOC SANS UNITÉ EXTÉRIEURE.



 **Xpelair**[®]

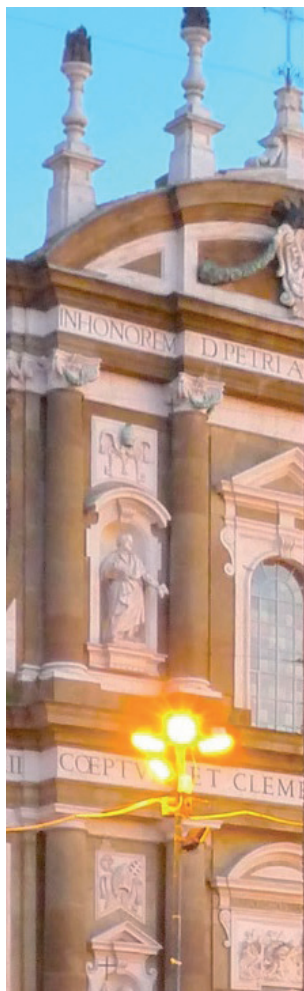
Member of the Glen Dimplex Group

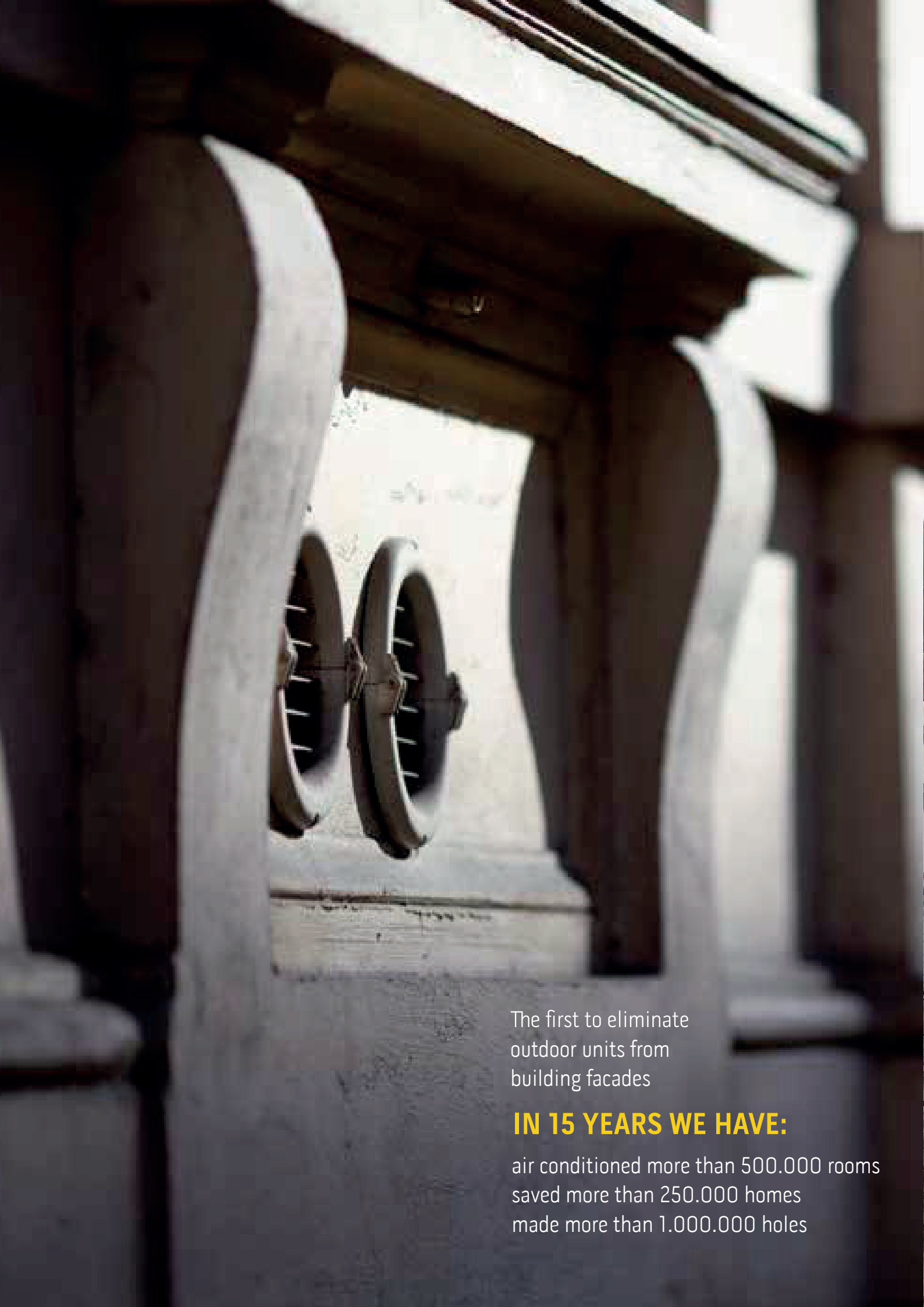


demagro
ELECTRO



THE DESIRE TO INNOVATE AND STAND OUT WITH
UNIQUE PRODUCTS THAT OFFER TECHNOLOGICAL
SOLUTIONS, BEAUTY AND RESPECT THE ENVIRONMENT





The first to eliminate
outdoor units from
building facades

IN 15 YEARS WE HAVE:

air conditioned more than 500.000 rooms
saved more than 250.000 homes
made more than 1.000.000 holes

Digitemp **THE AIR CONDITIONER WITHOUT OUTDOOR UNIT**

WE HAVE SAVED
MORE THAN A MILLION BUILDINGS

The outdoor unit Digitemp has revolutionized domestic air conditioning and has been offering innovative solutions that help preserve the architectural and urbanistic of the cities for over 15 years

Digitemp is good for buildings and cities, and it has helped to preserve the narrow streets of Genoa, the arcades of Bologna, Romans buildings, Chilean embassies, South American hotels, the skyscrapers of Brasilia and the houses of Sydney.





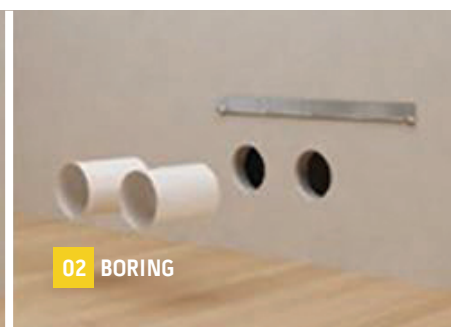
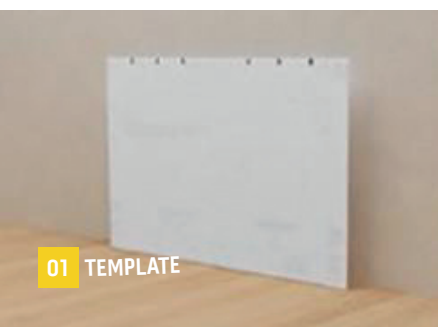
Digitemp

NO OUTDOOR UNIT

Digitemp's patented technology has made it possible to compact into a single machine what is traditionally split in two, the external motor is gone packaged to fully respect the spirit of buildings.

Digitemp ensures total architectural integration; from outside only two grids are visible, one for the air suction and one for exhaust.

- The external grids maximize the trade off between air flow and battery protection, ensuring the highest heat transfer coefficient and durability.



EASY INSTALLATION

Installing Digitemp is done completely from the inside: it is enough to drill two holes through coring. From the outside of the building only the 2 grids are visible, without any aesthetic impact.



Member of the Glen Dimplex Group

Digitemp **INVERTER,** **EFFICIENT AS NEVER** **BEFORE**

Digitemp Inverter is the air conditioner without outdoor unit which, thanks to inverter technology, saves up to 30%* of energy compared with a traditional product.

The Digitemp Inverter range includes heat pump models, which can replace traditional heating in intermediate seasons or support it. Design by King and Miranda.





INVERTER SYSTEM

Digitemp Inverter allows a energy saving compared to traditional technology systems.

Through continuous monitoring of the variable speed compressor's rotation, power is adjusted according to the thermal load requirement, ensuring high comfort and energy saving.



AIR FLOW MAXIMIZED



Optimal air flow distribution: Up to 490 m³ / h of air effectively introduced in environment thanks to a large flap (690x60 mm).

PURE SYSTEM 2



Digitemp is equipped with a multi filtering system that combines an Electrostatic filter - that prevents small particles such as smoke, dust, pollen and pet hair, helping to prevent allergic reactions – with an activated carbon filter - that eliminates bad odors and inactivates any gases harmful to health.

WARM SYSTEM



HP models are heat pump enabled. With this feature you can replace traditional heating in intermediate seasons or enhance it.

EASY CARE SYSTEM



Maintenance and filter cleaning are now easier than ever: maximum machine access, both in case of cleaning and maintenance.

HIGH EFFICIENCY



Higher efficiency, lower consumption: Digitemp DC inverter air conditioners are classified as dual class A

ELEGANT DESIGN



Design by King and Miranda.

SPECIFICATIONS

Digitemp INVERTER

Digitemp INVERTER 12 HP Cod. 01052

FUNCTIONS

Economy mode: enables energy saving, automatically optimizing performance

Fan only mode

Dehumidification only mode

Auto mode: changed parameters depending on ambient temperature

Sleep mode: gradually increases the temperature set and ensures reduced noise for greater wellbeing at night.

Automatic condensation discharge: in cooling operation condensation is exhausted without the use of a dedicated drain.

FEATURES

Power version : 2.7 kW

Available in versions:

HP (Heat Pump Inverter)

Double Class A

Refrigerant gas R410A*

Installation versatility: top or bottom Wall installation also possible

Easy installation:

Digitemp can be installed from the inside in a few minutes.

Wireless wall control (Optional)

Large flap for a homogeneous diffusion of the air in the room

Multifunction remote control

24 hour Timer



Member of the Glen Dimplex Group

* hermetically sealed equipment containing fluorinated gas

TECHNICAL INFORMATION

Digitemp INVERTER



Product name			Digitemp INVERTER 12 HP
Product Code			01052
Nominal cooling capacity (1)	Pnominal	kW	2,7
Cooling power (min/max) (1)		kW	1,8 / 3,1
Nominal heating capacity (1)	Pnominal	kW	2,7
Heating power (min/max) (1)		kW	1,8 / 3,0
Nominal power consumption for cooling (1)	PEER	kW	1,0
Power consumption for cooling (min/max) (1)		kW	0,58 / 1,40
Nominal absorption for cooling (1)		A	4,6
Absorption for cooling (min/max) (1)		A	2,7 / 6,4
Nominal power consumption for heating (1)	PCOP	kW	0,8
Power consumption for heating (min/max) (1)		kW	0,53 / 1,30
Nominal absorption for heating (1)		A	3,8
Absorption for heating (min/max) (1)		A	2,4 / 5,9
Nominal energy efficiency index (1)	EERd		2,7
Nominal efficiency coefficient (1)	COPd		3,2
Energy efficiency class in cooling (1)			A
Energy efficiency class in heating (1)			A
Energy consumption in "thermostat off" mode	PTO		12,0
Energy consumption in "standby" mode (EN 62301)	PSB		1,0
Energy consumption for double pipe appliances (1) cooling function	QDD	kWh/h	1,0
Energy consumption for double pipe appliances (1) heating function	QDD	kWh/h	0,8
Supply voltage	V-F-Hz		230-1-50
Supply voltage minimum/maximum	V		198 / 264
Maximum power consumption in cooling mode (1)	W		1400
Maximum absorption in cooling mode (1)	A		6,4
Maximum power consumption in heating mode (1)	W		1300
Maximum absorption in heating mode (1)	A		5,8
Maximum power consumption with electric resistance heating	W		-
Maximum absorption with electric resistance heating	A		-
Dehumidification capacity	l/h		1,1
Air flow rate in cooling environment (max/med/min)	m³/h		490 / 430 / 360
Air flow rate in heating environment (max/med/min)	m³/h		490 / 430 / 360
Air flow rate with electric resistance heating environment	m³/h		-
External air flow rate in cooling (max/min)	m³/h		500 / 340
External air flow rate in heating (max/min)	m³/h		500 / 340
Internal ventilation speed			3
External ventilation speed			6
Diameter wall holes	mm		202*
Electric resistance heating			-
Maximum range remote control (distance / angle)	m / °		8 / ±80°
Dimensions (Larg. x Alt. x Prof.) (without packaging)	mm		902 x 506 x 229
Dimensions (Larg. x Alt. x Prof.) (with packaging)	mm		980 x 610 x 350
Weight (without packaging)	Kg		40
Weight (with packaging)	Kg		43
Sound pressure (Min Max) (2)		dB(A)	33-43
Sound pressure level (only internal) (EN 12102)	LWA	dB(A)	58
Degree of protection provided by covers			IP 20
Refrigerant gas**	Tipo-Type		R410A
Global warming potential	GWP	kgCO2 eq.	2088
Refrigerant gas charge		kg	0,58
Maximum operating pressure		MPa	3,6
Power cable (N° pole x section mm2)			3 x 1,5

LIMITS OF OPERATING CONDITIONS

Internal Ambient Temperature	Maximum temperature in cooling	DB 35°C - WB 24°C
	Minimum temperature in cooling	DB 18°C
	Maximum temperature in heating	DB 27°C
	Minimum temperature in heating	-
External Ambient Temperature	Maximum temperature in cooling	DB 43°C - WB 32°C
	Minimum temperature in cooling	DB -10°C
	Maximum temperature in heating	DB 24°C - WB 18°C
	Minimum temperature in heating	DB -15°C

(1) TEST CONDITIONS: data refers to regulation EN14511

(2) Data test declaration in semianechoic room at a distance of 2m, minimum sound pressure with ventilation only.

* Thanks to the maintenance of the same air entry and exit hole distance and the possibility of installation with 162 mm diameter holes, models in the Digitemp Smart, Digitemp Inverter and Digitemp Act range may easily substitute previously installed Digitemp Star and Digitemp Sky models.

** EU Regulation 517/2014 hermetically sealed device, which contains and works with fluorinated greenhouse gases with a GWP of 2088

Digitemp BOILER COOLS/HEATS AND PRODUCES DOMESTIC HOT WATER, ALL IN ONE

Digitemp Boiler is the revolutionary patented solution that simultaneously manages air conditioning and hot water production, with no external unit.

Digitemp Boiler is the optimal solution for the needs of small businesses, studios, apartments and second houses.





BOILER TECHNOLOGY

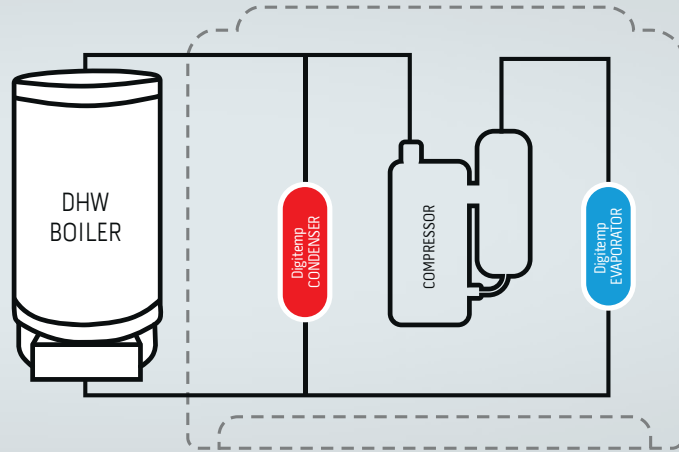
Thermo Comfort Patented Technology

Digitemp Boiler synthesizes two technologies in a combined cycle:

- air/air technology dedicated to comfort (cooling and heating)
- air/water technology dedicated to the domestic hot water production

Digitemp BOILER IS A SYSTEM WITH FLEXIBLE FUNCTIONALITY:

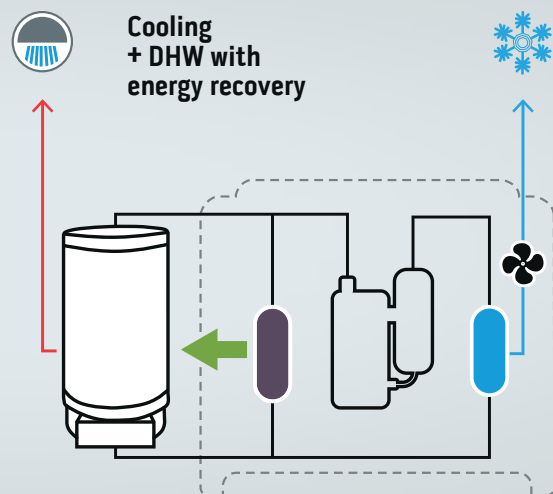
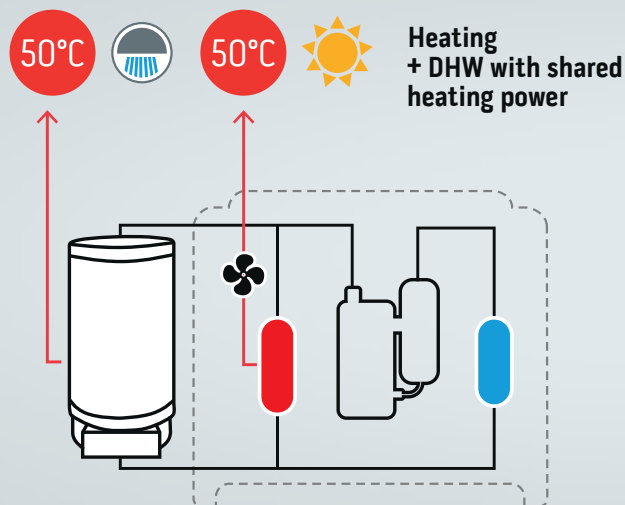
- COOLING ONLY
- HEATING ONLY
- ACS ONLY
- COOLING + ACS
- HEATING + ACS



TOTAL RECOVERY

Total recovery of the energy produced in cooling, which is used for the production of hot water. In hot weather, the cooling mode allows to the production of hot water for free:

Heating + DHW: the two units share the output power.
Cooling + DHW: the heat extracted from indoor air instead of being disposed externally is transferred to the boiler for DHW production, allowing a total energy recovery.



Member of the Glen Dimplex Group

HEATING TIMES



Above-average performance for replenishment times compared to traditional heat pump boilers: the replenishment time is 149 minutes in standard mode of operation and 51 minutes in BOOST mode.

HOT WATER UP TO - 7°C



The operation of the refrigerator circuit is guaranteed up to -7° C in comparison with the 0° C of traditional heat pump boilers.

COMPACT TECHNOLOGY



The Digitemp Boiler wall unit features a small overall dimensions designed for confined spaces in town houses or small businesses. However, the 50 liters capacity ensures a significant volume of mixed water at 38 ° C, without considering water replenishment, that is extremely rapid.



USER FRIENDLY

Digital controls which are intuitive and easy to use.

HIGH EFFICIENCY



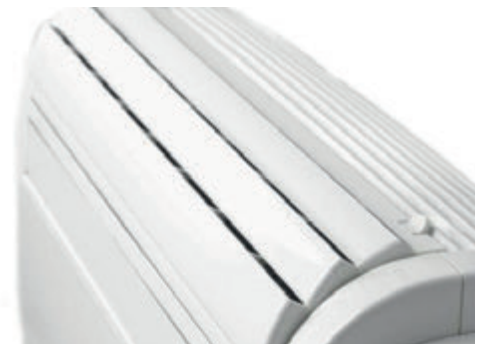
The flexibility of the Digitemp Boiler system guarantees the maximum exploitation of the refrigerant circuit allowing high overall efficiency.

EASY INSTALLATION



Installable from the top or bottom, in minutes and all from the inside, avoiding difficult preparation tasks and related costs. The external aesthetic result is a minimal visual impact thanks to the presence of only two grilles.

AIR FLOW MAXIMIZED



Optimal air flow and distribution: Up to 490 m³ / h of air effectively introduced in the environment thanks to the large flap (690x60 mm).

SPECIFICATIONS

Digitemp BOILER

Digitemp BOILER MASTER Cod. 01422



MASTER FEATURES

Cooling capacity: 2.6 kW

HP (Heat pump) capacity: 2.5 kW

Installation versatility: Wall installation from the top or bottom glass installation may be possible*

Easy installation: Digitemp Twin can be installed from the inside within a few minutes.

Large flap for a homogeneous diffusion of the air in the environment



Digitemp BOILER WALL
Cod. 599509A

BOILER FEATURES

Heating times:

1h49min (43 min in TURBO** mode)

Accumulation capacity: 50 l

Electrical power supply: 1,2 kW

FUNCTIONS

OF THE SYSTEM

Fan only mode

Dehumidification only mode

Auto mode:

Modulates operation in relation to the ambient temperature.

Sleep mode: gradually increases the temperature set and ensures reduced noise for greater wellbeing at night.

Automatic water condensed discharge: in cooling operation condensation is discharged without the use of specialized conduits.

Cooling

Heating

Cooling Heating Domestic Hot Water

Cooling + DHW

Heating + DHW

FEATURES

OF THE SYSTEM

Dual class A

Refrigerant gas R410A***

Installation versatility:

Wall installation from the top or bottom glass installation of master unit may be possible*

Easy installation:

Digitemp can be installed from the inside within a few minutes.

Large flap for a homogeneous diffusion of the air in the environment

Multifunction remote control

24 hour Timer



Member of the Glen Dimplex Group

* Glass installation possible by the use of a specific freestanding panel not supplied by Thermo Comfort

** With electrical resistor inserted

*** non hermetically sealed equipment containing fluorinated gas

TECHNICAL INFORMATION Digitemp BOILER MASTER



Product name			Digitemp BOILER MASTER
Product code			01422
Nominal cooling capacity (1)	Pnom.	kW	2,6
Nominal heating capacity (1)	Pnom.	kW	2,5
Nominal power consumption for cooling (1)	PEER	kW	0,9
Nominal absorption for cooling (1)		A	4,3
Nominal power consumption for heating (1)	PCOP	kW	0,8
Nominal absorption for heating (1)		A	3,5
Nominal energy efficiency index (1)	EERd		2,7
Nominal efficiency coefficient (1)	COPd		3,1
Energy efficiency class in cooling (1)			A
Energy efficiency class in heating (1)			A
Energy consumption in "thermostat off" mode	PTO	W	14,0
Energy consumption in "standby" mode (EN 62301)	PSB	W	1,0
Energy consumption for double pipe appliances (1) cooling function	QDD	kWh/h	0,9
Energy consumption for double pipe appliances (1) heating function	QDD	kWh/h	0,8
Supply voltage	V-F-Hz		230-1-50
Supply voltage minimum/maximum	V		198 / 264
Maximum power consumption in cooling mode (1)		W	1200
Maximum absorption in cooling mode (1)		A	5,4
Maximum power consumption in heating mode (1)		W	1080
Maximum absorption in heating mode (1)		A	4,8
Dehumidification capacity		l/h	1,1
Air flow rate in cooling environment (max/med/min)		m³/h	490 / 430 / 360
Air flow rate in heating environment (max/med/min)		m³/h	450 / 400 / 330
External air flow rate in cooling (max/min)		m³/h	500 / 370 / 340
External air flow rate in heating (max/min)		m³/h	500 / 370 / 340
Internal ventilation speed			3
External ventilation speed			3
Diameter wall holes		mm	202*
Dimensions (Larg. x Alt. x Prof.) (without packaging)		mm	902 x 516 x 229
Weight (without packaging)		Kg	40,5
Sound pressure level (only internal) (EN 12102)	LWA	dB(A)	57
Sound pressure (2)		dB(A)	33-42
Degree of protection provided by covers			IP 20
Refrigerant gas**		Tipo-Type	R410A
Global warming potential	GWP	kgCO2 eq.	2088
Refrigerant gas charge		kg	0,85
Power cable (N° pole x section mm2)			3 x 1,5

LIMITS OF OPERATING CONDITIONS

Internal Ambient Temperature	Maximum temperature in cooling	DB 35°C - WB 24°C
	Minimum temperature in cooling	DB 18°C
	Maximum temperature in heating	DB 27°C
	Minimum temperature in heating	-
External Ambient Temperature	Maximum temperature in cooling	DB 43°C - WB 32°C
	Minimum temperature in cooling	DB -10°C
	Maximum temperature in heating	DB 24°C - WB 18°C
	Minimum temperature in heating	DB -15°C

Performance and optimal operation are guaranteed with units operating alternately. In simultaneous operation ambient air fan speed works at minimum speed. Performance is measured by gas piping at a length of 5 m.

1. TEST CONDITIONS: data refers to regulation EN14511
2. Data test declaration in semianechoic room at a distance of 2m, minimum sound pressure with ventilation only.

* Thanks to the maintenance of the same air entry and exit hole distance and the possibility of installation with 162 mm diameter holes, models in the Digitemp Smart, Digitemp Inverter and Digitemp Act range may easily substitute previously installed Digitemp Star and Digitemp Sky models.

** EU Regulation 517/2014 hermetically sealed device, which contains and works with fluorinated greenhouse gases with a GWP of 2088

TECHNICAL INFORMATION Digitemp BOILER WALL



Product name			Digitemp BOILER WALL
Product code			599509A
Overall heating efficiency + DHW			2,3
Overall cooling efficiency + DHW			2,9
Heating time (*)	hh:mm		01:49
Heating time BOOST mode (*)	hh:mm		00:43
Electrical power supply	W		1200
Accumulation capacity	l		50
Dimensions	mm		400 x 416 x 760
Weight without water	kg		25
Insulation thickness	mm		30
Power cable (N° pole x section mm2)			3x1
Maximum distance master and boiler	m		10
Maximum height difference master and boiler	m		5
Electrical protection			IPX2
Diameter water connectors	"		1/2 GM
Diameter refrigerant connectors	"		3/8

*values obtained in accordance with regulation EN 16147 indoor air temperature 20°C, external air 7°C RH 85%, inlet water at 10°C and temperature set at 55°C

** with active electrical resistance

Vraag ook onze andere brochures aan.
Demandez nos autres brochures.



Member of the Glen Dimplex Group